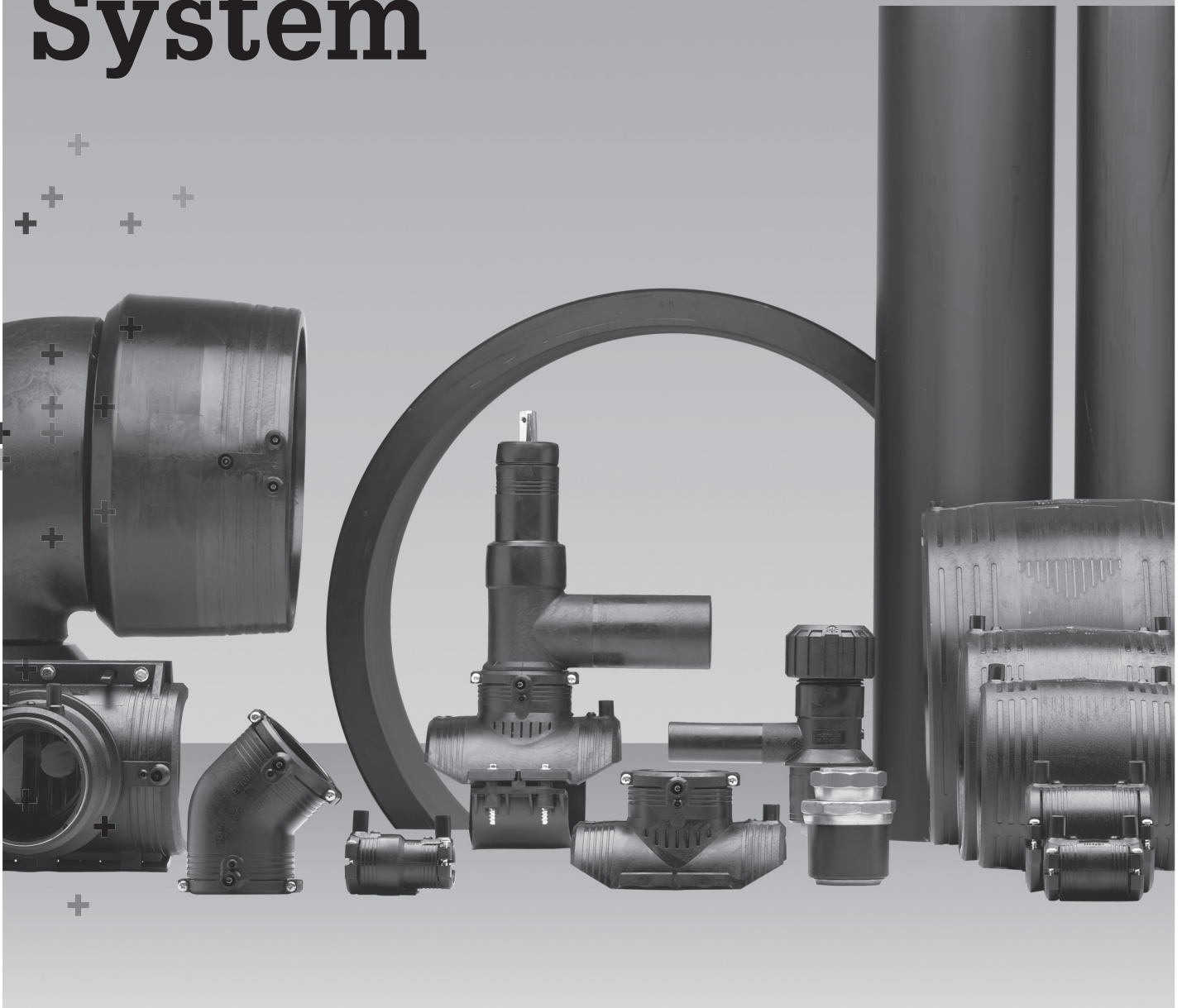


Section 6

ecoFIT[®] Industrial Polyethylene Piping System



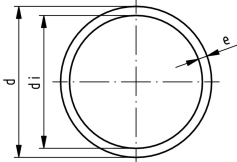


ecoFIT Metric PE

204

ecoFIT Metric PE

ecoFIT Pipe

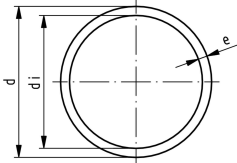


ecoFIT pipe SDR11

Model:

- Material: PE100
- Color: Black
- Dimension: DIN 8074
- Pipe length: 32.8ft (10m), with plain ends

d (mm)	PN (bar)	Part No.	e (mm)	di (mm)
20	16	193 017 156	1.9	16.2
25	16	193 017 157	2.3	20.4
32	16	193 017 158	2.9	26.2
40	16	193 017 159	3.7	32.6
50	16	193 017 160	4.6	40.8
63	16	193 017 161	5.8	51.4
75	16	193 017 162	6.8	61.4



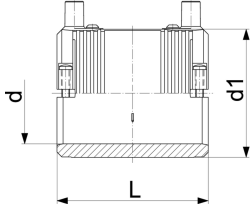
ecoFIT pipe SDR17.5

Model:

- Material: PE100
- Color: Black
- Dimension: DIN 8074
- Pipe length: 32.8ft (10m), with plain ends

d (mm)	PN (bar)	Part No.	weight (kg/m)	e (mm)	di (mm)
90	10	193 017 113	1.400	5.1	79.8
110	10	193 017 114	2.100	6.3	97.4
160	10	193 017 117	4.400	9.1	141.8
225	10	193 017 120	8.640	12.8	199.4
250	10	193 017 121	10.700	14.2	221.6

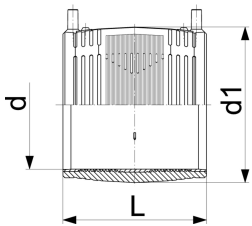
ecoFIT



Coupler With integral pipe fixation

- PE 100 SDR 11 (ISO S5)
- 4mm pin connectors
- Limited path fusion indicators
- Removable center stop

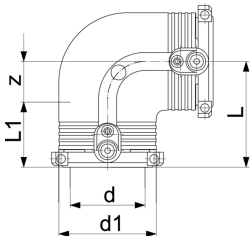
d (mm)	Part No.	d1 (mm)	L (mm)
20	753 911 606	31	70
25	753 911 607	36	70
32	753 911 608	44	72
40	753 911 609	54	80
50	753 911 610	66	88
63	753 911 611	81	96



Coupler

- PE 100 SDR 11 (ISO S5)
- 4mm pin connectors
- Limited path fusion indicators
- Removable centre stop up to d160

d (mm)	Part No.	GP weight (kg)	d1 (mm)	L (mm)
75	753 911 612	12	0.282	96
90	753 911 613	10	0.406	113
110	753 911 614	5	0.692	138
160	753 911 617	6	1.362	196
225	753 911 620	3	3.329	273
250	753 911 621	2	4.678	304



Elbow 90° With integral pipe fixation

- PE 100 SDR 11 (ISO S5)
- 4mm pin connectors
- Limited path fusion indicators

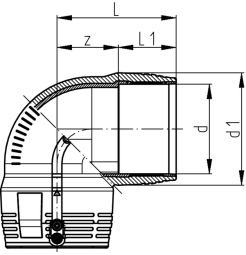
d (mm)	Part No.	weight (kg)	d1 (mm)	L (mm)	L1 (mm)	z (mm)
20	753 101 606	0.080	35	54	34	20
25	753 101 607	0.074	35	54	34	20
32	753 101 608	0.094	44	53	36	17
40	753 101 609	0.128	54	62	39	23
50	753 101 610	0.196	66	71	43	28
63	753 101 611	0.312	81	81	48	32



Elbow 90°

- PE 100 SDR 11 (ISO S5)
- 4mm pin connectors
- Limited path fusion indicators

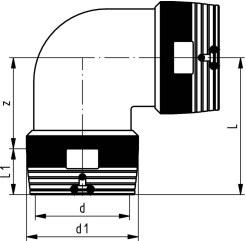
d (mm)	Part No.	weight (kg)	d1 (mm)	L (mm)	L1 (mm)	z (mm)
75	753 101 612	0.415	97	94	54	40
90	753 101 813	0.828	115	122	62	60
110	753 101 814	1.224	140	147	72	76
160	753 101 817	3.830	196	191	92	103



Elbow 90°

- PE 100 SDR 11 (ISO S5)
- 4mm pin connectors
- Limited path fusion indicators
- Two separate fusion zones

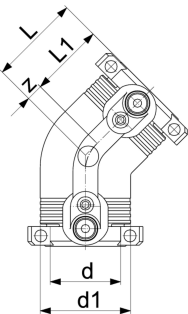
d (mm)	Part No.	weight (kg)	d1 (mm)	L (mm)	L1 (mm)	z (mm)
225	753 101 820	13.220	280	318	112	206
250	753 101 821	16.600	310	347	123	224

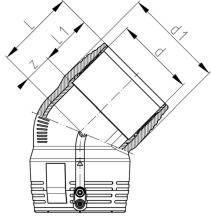


Elbow 45° With integral pipe fixation

- PE 100 SDR 11 (ISO S5)
- 4mm pin connectors
- Limited path fusion indicators

d (mm)	Part No.	weight (kg)	d1 (mm)	L (mm)	L1 (mm)	z (mm)
32	753 151 608	0.075	44	44	36	8
40	753 151 609	0.106	54	50	39	11
50	753 151 610	0.171	66	56	43	13
63	753 151 611	0.252	81	63	48	15

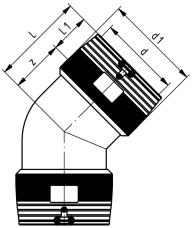




Elbow 45°

- PE 100 SDR 11 (ISO S5)
- 4mm pin connectors
- Limited path fusion indicators

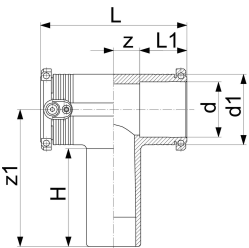
d (mm)	Part No.	weight (kg)	d1 (mm)	L (mm)	L1 (mm)	z (mm)
75	753 151 612	0.332	97	71	54	17
90	753 151 813	0.583	115	91	62	29
110	753 151 814	0.985	140	112	72	40
160	753 151 817	3.055	196	135	92	42



Elbow 45°

- PE 100 SDR 11 (ISO S5)
- 4mm pin connectors
- Limited path fusion indicators
- Two separate fusion zones

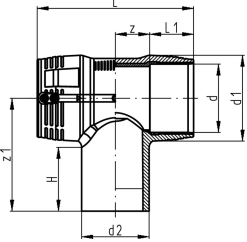
d (mm)	Part No.	weight (kg)	d1 (mm)	L (mm)	L1 (mm)	z (mm)
225	753 151 820	11.300	280	247	112	135
250	753 151 821	13.500	310	275	123	152



Tee 90° equal With integral pipe fixation

- PE 100 SDR 11 (ISO S5)
- 4mm pin connectors
- Limited path fusion indicators

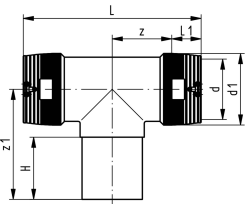
d (mm)	Part No.	weight (kg)	d1 (mm)	L (mm)	L1 (mm)	z (mm)	z1 (mm)	H (mm)
20	753 211 606	0.085	35	88	32	11	92	67
25	753 211 607	0.075	35	90	32	11	92	70
32	753 211 608	0.118	44	102	34	15	100	74
40	753 211 609	0.175	54	119	39	21	114	82
50	753 211 610	0.252	66	135	42	24	126	90
63	753 211 611	0.407	81	151	46	28	150	102



Tee 90° equal

- PE 100 SDR 11 (ISO S5)
- 4mm pin connectors
- Limited path fusion indicators

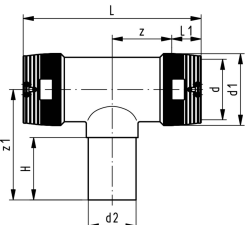
d (mm)	Part No.	weight (kg)	d1 (mm)	L (mm)	L1 (mm)	z (mm)	z1 (mm)	H (mm)
75	753 211 612	0.569	97	178	54	35	143	87
90	753 201 813	0.891	115	205	62	41	161	94
110	753 201 814	1.576	140	255	72	56	184	104
160	753 201 817	4.386	196	325	92	71	206	103



Tee 90° equal

- PE 100 SDR 11 (ISO S5)
- 4mm pin connectors
- Limited path fusion indicators
- Two separate fusion zones

d (mm)	Part No.	weight (kg)	d1 (mm)	L (mm)	L1 (mm)	z (mm)	z1 (mm)	H (mm)
225	753 201 820	15.900	280	636	112	206	270	122
250	753 201 821	18.900	310	685	123	220	288	127



Tee 90° reduced

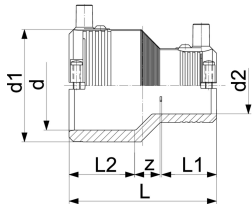
- PE 100 SDR 11 (ISO S5)
- 4mm pin connectors
- Limited path fusion indicators
- Two separate fusion zones

d (mm)	d2 (mm)	Part No.	weight (kg)	d1 (mm)	L (mm)	L1 (mm)	z (mm)	z1 (mm)	H (mm)
110	90	753 211 034	1.652	140	255	72	56	245	80
160	63	753 211 037	5.660	200	493	90	127	176	65
160	90	753 211 039	5.508	200	492	90	158	188	79
160	110	753 211 040	5.157	200	491	90	158	195	85
225	90	753 211 069	13.100	280	666	112	217	226	80
225	110	753 211 070	13.100	280	670	112	217	235	85
225	160	753 211 073	13.600	280	667	112	217	255	105
250	110	753 211 080	11.660	310	709	123	220	245	85
250	160	753 211 083	17.070	310	711	123	220	264	101



Reducer With integral pipe fixation

- PE 100 SDR 11 (ISO S5)
- 4mm pin connectors
- Limited path fusion indicators

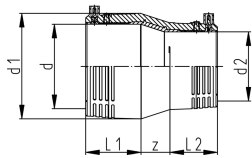


d (mm)	d2 (mm)	Part No.	weight (kg)	d1 (mm)	L (mm)	L1 (mm)	L2 (mm)	z (mm)
25	20	753 901 639	0.051	35	74	34	34	6
32	20	753 901 640	0.056	44	79	33	36	10
32	25	753 901 641	0.062	44	79	33	36	10
40	20	753 901 644	0.069	54	88	33	39	15
40	25	753 901 645	0.084	54	88	33	39	15
40	32	753 901 646	0.095	54	88	33	39	13
50	32	753 901 651	0.124	66	96	35	43	18
50	40	753 901 652	0.119	66	96	39	43	14
63	32	753 901 656	0.158	81	105	35	48	23
63	40	753 901 657	0.176	81	105	39	48	19
63	50	753 901 658	0.176	81	105	43	48	15



Reducer

- PE 100 SDR 11 (ISO S5)
- 4mm pin connectors
- Limited path fusion indicators

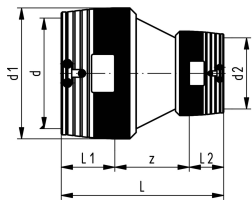


d (mm)	d2 (mm)	Part No.	weight (kg)	d1 (mm)	L (mm)	L1 (mm)	L2 (mm)	z (mm)
90	63	753 901 831	0.385	113	146	63	47	36
110	90	753 901 833	0.700	138	173	73	63	38
160	110	753 901 834	1.641	196	226	91	70	65

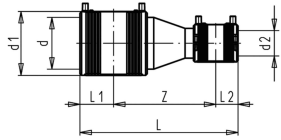


Reducer

- PE 100 SDR 11 (ISO S5)
- 4mm pin connectors
- Limited path fusion indicators
- Two separate fusion zones



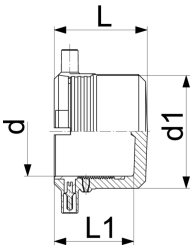
d (mm)	d2 (mm)	Part No.	weight (kg)	d1 (mm)	L (mm)	L1 (mm)	L2 (mm)	z (mm)
225	160	753 901 838	6.000	280	385	112	90	183
250	160	753 901 840	7.860	310	400	123	90	187



Reducer (kit)

- PE 100 SDR 11 (ISO S5)
- Integral pipe fixation (up to d63)
- 4mm pin connectors
- Limited path fusion indicators
- Supplied as kit including ELGEP® Plus Coupler and Spigot Reducer

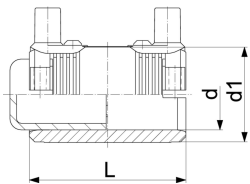
d (mm)	d2 (mm)	Part No.	weight (kg)	d1 (mm)	L (mm)	L1 (mm)	L2 (mm)	z (mm)
75	40	193 280 992	0.574	96	265	55	40	170
75	50	193 280 993	0.623	96	269	55	44	170
75	63	193 280 994	0.700	96	273	55	48	170
90	50	193 280 958	0.857	113	297	63	44	190
90	75	193 280 995	1.071	113	308	63	55	190
110	63	193 280 950	1.389	138	326	73	48	205
110	75	193 280 996	1.496	138	333	73	55	205
160	90	193 280 954	3.060	196	370	90	63	217



End cap With integral pipe fixation

- PE 100 SDR 11 (ISO S5)
- 4mm pin connectors
- Limited path fusion indicators

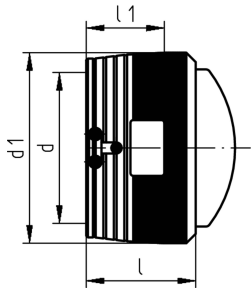
d (mm)	Part No.	weight (kg)	d1 (mm)	L (mm)	L1 (mm)
20	753 961 606	0.041	35	52	44
25	753 961 607	0.046	35	52	44
32	753 961 608	0.058	44	52	44
40	753 961 609	0.064	54	56	47
50	753 961 610	0.154	66	60	49
63	753 961 611	0.142	81	66	54



End cap (kit)

- PE 100 SDR 11 (ISO S5)
- 4mm pin connectors
- Limited path fusion indicators
- Supplied as kit including ELGEP® Plus Coupler

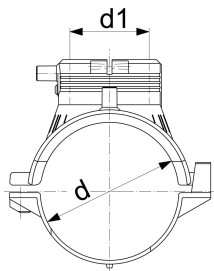
d (mm)	Part No.	weight (kg)	d1 (mm)	L (mm)
75	753 961 712	0.446	96	110
90	753 961 713	0.663	113	125
110	753 961 714	1.090	133	145



End cap

- PE 100 SDR 11 (ISO S5)
- 4mm pin connectors
- Limited path fusion indicators

d (mm)	Part No.	weight (kg)	d1 (mm)	L (mm)	L1 (mm)
160	753 961 617	1.782	200	143	90
225	753 961 620	4.500	280	170	112
250	753 961 621	6.300	310	185	123

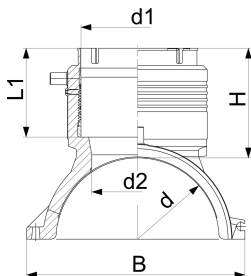


Electrofusion saddle

- PE 100 SDR 11 (ISO S5)
- Complete with lower part
- 4mm pin connectors
- Limited path fusion indicators

d (mm)	d1 (mm)	Part No.	weight (kg)	L (mm)
63	63	193 131 037	0.325	165
75	63	193 131 047	0.455	165
90	63	193 131 057	0.415	165
*	110	193 133 067	0.490	182
*	160	193 133 097	0.543	182
225	63	193 131 127	0.618	165
250	63	193 131 137	0.627	165

L = length / Länge



Branch saddle outlet 90 - 110mm

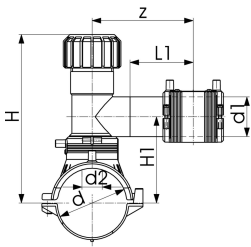
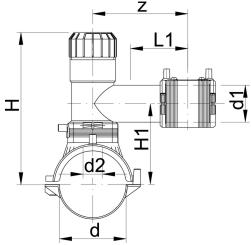
- PE 100 SDR 11 (ISO S5)
- 4mm pin connectors
- Limited path fusion indicators

d (mm)	d1 (mm)	Part No.	GP	weight (kg)	H (mm)	L (mm)	L1 (mm)	B (mm)	d2 (mm)	SDR pipe
110	90	193 135 009	4	1.124	101	220	82	164	65	9-17.6
110	110	193 135 010	4	1.224	107	220	88	164	65	9-17.6
160	90	193 135 039	4	1.449	102	240	82	215	65	9-17.6
160	110	193 135 040	4	1.582	108	240	88	215	86	9-17.6
225	90	193 135 069	1	2.006	102	260	82	287	65	9-17.6
225	110	193 135 070	1	2.400	108	260	88	287	86	9-17.6
250	90	193 135 079	2	2.145	102	260	82	312	65	9-17.6
250	110	193 135 080	2	2.258	108	260	88	312	86	9-17.6



Tapping saddle (kit) With 360° rotatable outlet

- With integrated cutter to tap live mains under pressure
- Complete with lower part
- Limited path fusion indicators
- Long fusion outlet
- O-ring-sealed screw cap

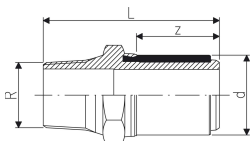


L = length / Länge

d (mm)	d1 (mm)	Part No.	SP	weight (kg)	d2 (mm)	H (mm)	H1 (mm)	L (mm)	L1 (mm)	z (mm)
63	20	193 132 402	1	0.754	32	186	108	165	76	130
63	25	193 132 403	1	0.761	32	186	108	165	76	130
63	32	193 132 404	1	0.773	32	186	108	165	76	130
63	40	193 132 405	1	0.798	32	186	108	165	76	130
63	50	193 132 436	1	1.619	32	234	112	165	100	160
63	63	193 132 437	1	1.623	32	234	112	165	100	160
75	20	193 132 442	1	0.879	32	191	113	165	76	130
75	25	193 132 443	1	0.900	32	191	113	165	76	130
75	32	193 132 444	1	0.917	32	191	113	165	76	130
75	40	193 132 445	1	0.958	32	240	118	165	76	160
75	50	193 132 446	1	1.748	32	240	118	165	100	160
75	63	193 132 447	1	1.753	32	240	118	165	100	160
90	20	193 132 452	1	0.856	32	199	121	165	76	130
90	25	193 132 453	1	0.858	32	199	121	165	76	130
90	32	193 132 454	1	0.857	32	199	121	165	76	130
90	40	193 132 455	1	0.780	32	199	126	165	76	130
90	50	193 132 456	1	1.711	32	248	126	165	100	160
90	63	193 132 457	1	1.707	32	248	126	165	100	160
110	20	193 132 462	1	0.907	32	209	131	165	76	130
110	25	193 132 463	1	0.905	32	209	131	165	76	130
110	32	193 132 464	1	0.875	32	209	131	165	76	130
110	40	193 132 465	1	0.961	32	209	136	165	76	130
110	50	193 132 466	1	1.133	35	258	136	165	100	160
110	63	193 132 467	1	1.330	35	258	136	165	100	160
160	20	193 132 492	1	0.910	32	234	156	165	76	130
160	25	193 132 493	1	0.933	32	234	156	165	76	130
160	32	193 132 494	1	0.954	32	234	156	165	76	130
160	40	193 132 495	1	0.965	32	234	161	165	76	130
160	50	193 132 496	1	1.375	35	283	161	165	100	160
160	63	193 132 497	1	1.378	35	283	161	165	100	160
225	20	193 132 522	1	1.460	32	266	188	165	71	130
225	25	193 132 523	1	0.991	32	266	188	165	71	130
225	32	193 132 524	1	1.095	32	266	188	165	76	130
225	40	193 132 525	1	1.134	32	266	193	165	76	130
225	50	193 132 526	1	1.921	35	315	193	165	100	160
225	63	193 132 527	1	1.951	35	315	193	165	100	160

Transition Adaptor PE/SS Male thread NPT

- PE 100 SDR 11 (ISO S5)
- Only for ELGEF Plus Couplers and Fittings

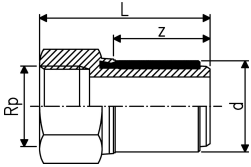


d (mm)	NPT (inch)	Part No.	weight (lb)	z (mm)	L (mm)
20	½	153 924 706	0.231	33	75
25	¾	153 924 707	0.320	33	76
32	1	153 924 708	0.485	35	80
40	1 ¼	153 924 709	0.849	39	86
50	1 ½	153 924 710	1.146	43	90
63	2	153 924 711	1.543	47	98



Transition Adaptor PE/SS
Female thread NPT

- PE 100 SDR 11 (ISO S5)
- Only for ELGEF Plus Couplers and Fittings

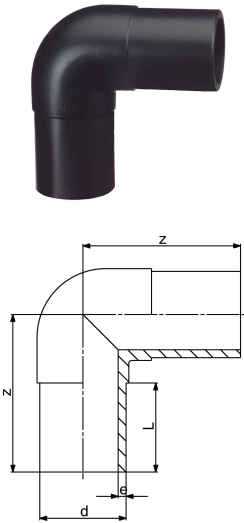


d (mm)	NPT (inch)	Part No.	weight (lb)	z (mm)	L (mm)
20	¾	153 924 206	0.187	33	65
25	¾	153 924 207	0.243	33	66
32	1	153 924 208	0.408	35	71
40	1 ¼	153 924 209	0.606	39	77
50	1 ½	153 924 210	0.805	43	81
63	2	153 924 211	1.213	47	89

ecoFIT Long Spigot

Elbow 90° PE100 SDR11

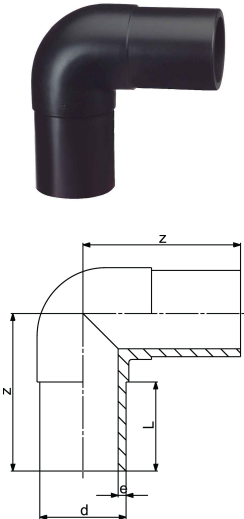
- Long spigot version



d (mm)	Part No.	weight (kg)	PSI	z (mm)	L (mm)	e (mm)
20	753 101 006	0.027	200	75	52	3.0
25	753 101 007	0.040	200	80	52	3.0
32	753 101 008	0.056	200	85	54	3.0
40	753 101 009	0.089	200	95	57	3.7
50	753 101 010	0.156	200	105	63	4.6
63	753 101 011	0.274	200	115	65	5.8
75	753 101 012	0.414	200	130	72	6.8

Elbow 90° PE100 SDR17/17,6

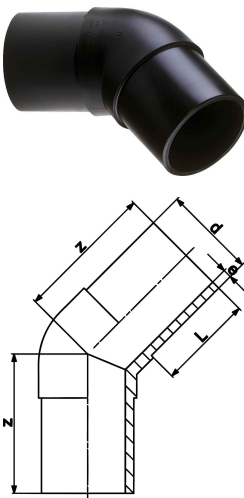
- Long spigot version



d (mm)	Part No.	weight (kg)	z (mm)	L (mm)	e (mm)	PSI
90	753 100 813	0.543	150	81	5.4	130
110	753 100 814	0.876	165	86	6.6	130
160	753 100 817	2.385	210	102	9.5	130
225	753 100 820	5.864	270	120	13.4	130
250	753 100 821	8.000	292	130	14.8	130

Elbow 45° PE100 SDR11

- Long spigot version

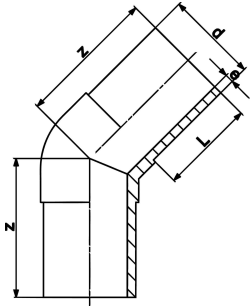


d (mm)	Part No.	weight (kg)	z (mm)	L (mm)	e (mm)
20	753 151 006	0.027	70	52	3.0
25	753 151 007	0.037	75	52	3.0
32	753 151 008	0.050	80	54	3.0
40	753 151 009	0.086	85	57	3.7
50	753 151 010	0.133	90	63	4.6
63	753 151 011	0.227	95	65	5.8
75	753 151 012	0.350	105	72	6.8



Elbow 45° PE100 SDR17/17,6

- Long spigot version

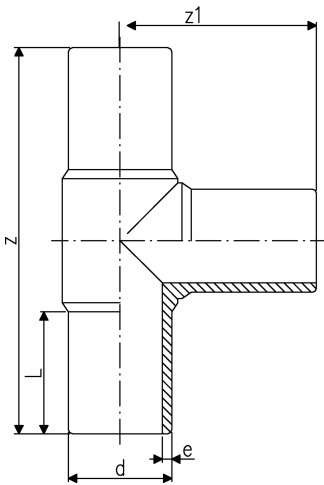


d (mm)	Part No.	weight (kg)	z (mm)	L (mm)	e (mm)	PSI
90	753 150 813	0.411	120	81	5.4	130
110	753 150 814	0.686	130	86	6.6	130
160	753 150 817	1.901	162	102	9.5	130
225	753 150 820	4.441	205	123	13.4	130
250	753 150 821	6.012	217	130	14.8	130



Tee 90° equal PE100 SDR11

- Long spigot version

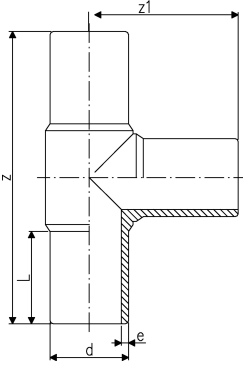


d (mm)	Part No.	SP weight (kg)	z (mm)	z1 (mm)	L (mm)	e (mm)	
20	753 201 006	1	0.038	150	75	52	3.0
25	753 201 007	1	0.054	160	80	52	3.0
32	753 201 008	1	0.077	170	85	54	3.0
40	753 201 009	1	0.130	190	95	57	3.7
50	753 201 010	1	0.214	210	105	63	4.6
63	753 201 011	1	0.376	230	115	65	5.8
75	753 201 012	1	0.599	264	132	72	6.8

Tee 90° equal PE100 SDR17/17,6

- Long spigot version

d (mm)	Part No.	weight (kg)	z (mm)	z1 (mm)	L (mm)	e (mm)	DN (mm)
90	753 200 813	0.777	300	150	80	5.4	
110	753 200 814	1.231	330	165	86	6.6	
160	753 200 817	3.201	428	214	104	9.5	
225	753 200 820	7.886	540	270	122	13.4	
250	753 200 821	10.000	575	288	130	14.8	

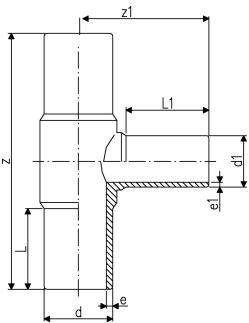


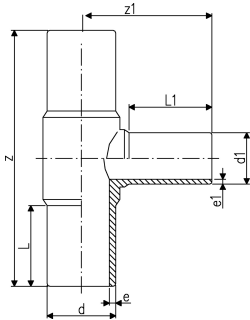
Tee 90° reduced PE100 SDR11

Model:

- Moulded
- 10 bar Gas / 16 bar Water
- Long spigot version

d (mm)	d1 (mm)	Part No.	weight (kg)	z (mm)	z1 (mm)	L (mm)	L1 (mm)	e (mm)	e1 (mm)
63	40	753 201 026	0.312	230	107	60	58	2.0	1.75
63	50	753 201 044	0.305	216	103	60	56	5.8	4.6
75	32	753 201 045	0.519	258	106	70	46	6.8	2.9
75	50	753 201 046	0.531	257	110	70	56	6.8	4.6
75	63	753 201 047	0.554	252	117	70	63	6.8	5.8

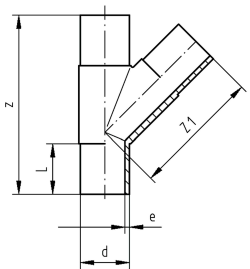




Tee 90° reduced PE100 SDR17/17.6

- Moulded
- Long spigot version

d (mm)	d1 (mm)	Part No.	weight (kg)	z (mm)	z1 (mm)	L (mm)	L1 (mm)	e (mm)	e1 (mm)
110	90	753 200 832	0.941	318	158	82	79	6.6	5.4
160	90	753 200 836	1.972	410	188	98	79	9.5	5.4
160	110	753 200 837	2.716	410	195	98	82	9.5	6.6
225	90	753 200 840	4.732	555	226	127	80	13.4	5.4
225	110	753 200 841	4.700	555	235	127	82	13.4	6.6
225	160	753 200 842	5.922	555	253	127	98	13.4	9.5
250	110	753 201 878	8.185	575	242	130	82	14.8	6.6
250	160	753 201 879	9.800	575	261	130	98	14.8	9.5



Tee 45° equal PE100 SDR11

- Long spigot version
- See general information for maximum allowable operating pressure
- **PE 100 SDR 11** (ISO S5)

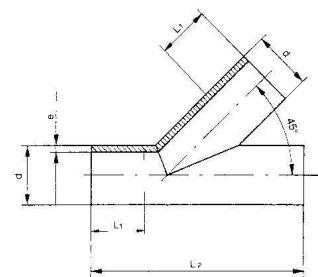
Model:

- 10 bar Gas / 16 bar Water

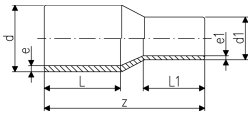
d (mm)	Part No.	weight (kg)	z (mm)	z1 (mm)	L (mm)	e (mm)
50	753 251 010	0.300	218	139	56	4.6
63	753 251 011	0.440	255	158	63	6.2
75	753 251 012	0.800	301	190	70	6.8

Branch 45° PE100 S8/SDR17.6

- For butt- and electro fusion
- Reduction factor = 0,5



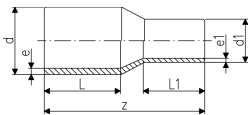
d (mm)	Part No.	weight (kg)	L1 (mm)	L2 (mm)	e (mm)
110	700 649 286	2.210	150	520	6.3
160	700 649 289	4.830	150	640	9.1
225	700 649 292	10.350	150	800	12.8
250	700 649 293	15.110	250	1000	14.2



Reducer PE100 SDR11

- Long spigot version

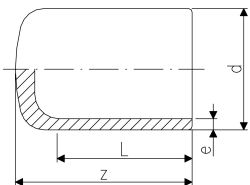
d (mm)	d1 (mm)	Part No.	weight (kg)	z (mm)	L (mm)	L1 (mm)	e (mm)	e1 (mm)
25	20	753 901 038	0.022	115	53	52	3.0	3,0
32	20	753 901 042	0.027	122	55	53	3.0	3,0
32	25	753 901 041	0.033	122	55	53	3.0	3,0
40	20	753 901 048	0.043	127	56	50	3.7	3,0
40	25	753 901 047	0.045	128	55	50	3.7	3,0
40	32	753 901 046	0.047	128	55	52	3.7	3,0
50	20	753 901 055	0.064	147	62	50	4.6	3,0
50	25	753 901 054	0.069	139	62	50	4.6	3,0
50	32	753 901 053	0.067	140	62	54	4.6	3,0
50	40	753 901 052	0.079	138	62	55	4.6	3,7
63	32	753 901 060	0.113	150	65	53	5.8	3,0
63	40	753 901 059	0.122	150	65	57	5.8	3,7
63	50	753 901 058	0.128	150	65	62	5.8	4,6
75	40	753 901 063	0.185	170	72	51	6.8	3,7
75	50	753 901 064	0.188	170	72	65	6.8	4,6
75	63	753 901 065	0.209	170	72	65	6.8	5,8



Reducer PE100 SDR17/17,6

- Long spigot version

d (mm)	d1 (mm)	Part No.	weight (kg)	z (mm)	L1 (mm)	L (mm)	e (mm)	e1 (mm)
110	90	753 900 876	0.333	205	80	85	6.6	5,4
160	90	753 900 888	0.752	248	85	120	9.5	5,4
160	110	753 900 890	0.930	245	85	100	9.5	6,6
225	160	753 900 896	2.020	280	100	120	13.4	9,5
250	225	753 900 802	2.385	332	120	162	14.8	13,4

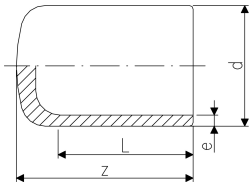


Cap PE100 SDR11

- Long spigot version

d (mm)	Part No.	weight (kg)	z (mm)	L (mm)	e (mm)
20	753 961 006	0.010	52	52	3.0
25	753 961 007	0.015	52	52	3.0
32	753 961 008	0.020	54	54	3.0
40	753 961 009	0.033	57	57	3.7
50	753 961 010	0.054	63	63	4.6
63	753 961 011	0.086	65	65	5.8
75	753 961 012	0.146	80	72	6.8

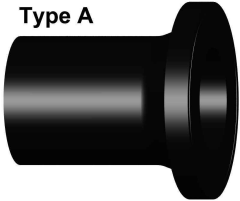
Cap PE100 SDR17/17,6



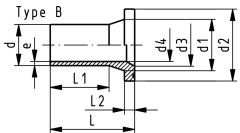
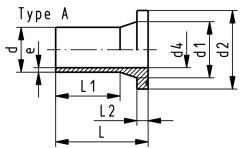
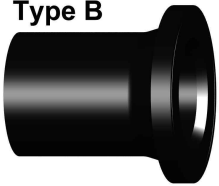
- Long spigot version

d (mm)	Part No.	weight (kg)	z (mm)	L (mm)	e (mm)
90	753 960 813	0.214	90	81	5.4
110	753 960 814	0.272	98	86	6.6
160	753 960 817	0.920	120	102	9.5
225	753 960 820	2.265	148	122	13.4
250	753 960 821	2.547	205	130	14.8

Type A



Type B

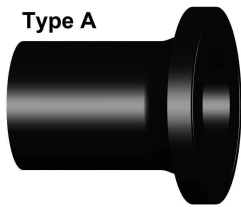


Flange Adapter SDR11

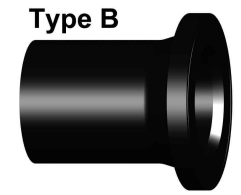
Model:

- Material: PE100
- Long spigot for Butt fusion or Electrofusion
- Suitable for flange connections to **ANSI/ASME B 16.5**
- Gasket: Profile flange gasket NBR No. 45 44 07, EPDM No. 48 44 07

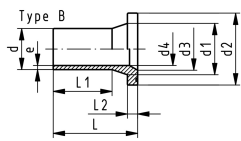
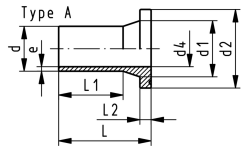
d (mm)	FM	Part No.	weight (kg)	d1 (mm)	d2 (mm)	d3 (mm)	d4 (mm)	L (mm)	L1 (mm)	L2 (mm)	e (mm)	Type
20	IR	753 800 006	0.022	27	45		16	85.0	41.0	7	1.9	A
25	IR	753 800 057	0.031	33	54		20	90.5	62.0	9	2.3	A
32	IR	753 800 058	0.046	40	63		26	91.5	61.0	10	3.0	A
40	IR	753 800 059	0.070	50	73		32	94.5	61.5	11	3.7	A
50	IR	753 800 060	0.098	61	82		40	105.0	55.0	12	4.6	A
63	IR	753 800 011	0.187	75	102		51	98.0	69.0	14	5.8	A
75	IR	753 800 012	0.314	89	122	66	61	125.0	89.0	16	6.8	B



Type A



Type B

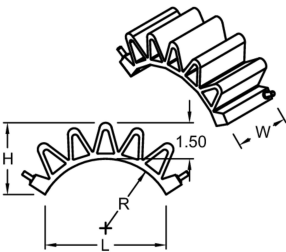


Flange Adaptor PE100 SDR17/17.6

Model:

- Material: PE100
- Long spigot for Butt fusion or Electrofusion
- Suitable for flange connections to metric (from d110 also to ANSI/ASME B16.5)
- Gasket d20-d630: Profile flange gasket NBR No. 45 44 07, EPDM No. 48 44 07
- Type A without chamfer, Type B with chamfer

d	DN	Part No.	weight	d1	d2	d3	d4	L	L1	L2	e	Type
(mm)	(mm)		(kg)	(mm)	(mm)	(mm)	(mm)	(mm)	(mm)	(mm)	(mm)	
90	80	753 800 088	0.367	105	138		79	140	103	17	5.4	A
110	100	753 800 089	0.571	125	158		96	160	117	18	6.6	A
160	150	753 800 092	1.342	175	212	151	141	200	147	25	9.5	B
225	200	753 800 095	2.456	235	268	210	198	200	138	32	13.4	B
250	250	753 800 096	3.500	285	320	245	220	220	148	35	14.8	B



Electrofusion Flex Restraint, GF PE100

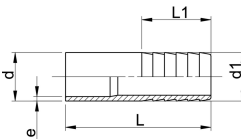
Range	Part No.	weight	Axial Load	Pack Qty	W	H	L
(mm)		(kg)	(psi)		(inch)	(inch)	(inch)
160 - 250	153 918 007	0.190	9,000	5	3	3	5



Hose connector PE100 SDR11 metric

Model:

- Material: PE100
- With butt fusion spigot SDR11 and parallel hose connection



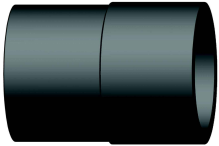
d	d1	FM	Part No.	weight	L	L1	e
(mm)	(mm)			(kg)	(mm)	(mm)	(mm)
20	20	IR	753 968 606	0.007	64	27	1.9
25	25	IR	753 968 607	0.015	75	36	2.3
32	32	IR	753 968 608	0.023	82	36	2.9
40	40	IR	753 968 609	0.034	84	42	3.7
50	50	IR	753 968 610	0.057	90	48	4.6
63	60	IR	753 968 611	0.095	100	50	5.8

IPS to Metric Transitions

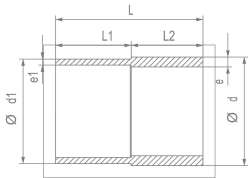


IPS to Metric Transition Reducer GF PE100 SDR 11

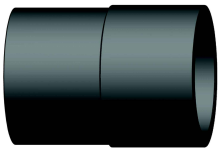
d2 (mm)	d (mm)	Part No. Part No.	weight (kg)	Pack Qty	L (inch)
20	2	153 909 706		1	2
25	2	153 909 707		1	2
32	2	153 909 713	0.048	1	2
40	2	153 909 709		1	2
50	2	153 909 711	0.054	1	2



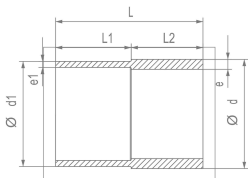
**Transition Adapter IPS SDR11 x Metric SDR17
(63mm = SDR11)**



D (inch)	d2 (mm)	L (mm)	L1 (mm)	L2 (mm)	e (inch)	e1 (mm)	PSI	Part No.
2	63	113.0	60	53.0	0.216	5.8	200	153 909 211
3	90	141.5	74	67.5	0.318	5.1	200	153 909 313
4	110	156.5	81	75.5	0.409	6.3	200	153 909 414
6	160	204.0	109	95.0	0.602	9.1	200	153 909 617
8	225	241.5	124	117.5	0.784	12.8	200	153 909 820
10	250	261.0	132	129.0	0.977	14.2	200	153 909 921

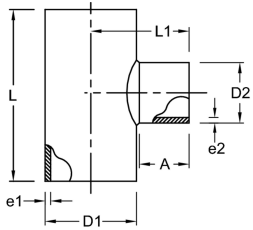


Transition Adapter IPS SDR17 x Metric SDR17 (63mm = SDR11)

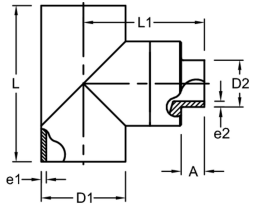


D (inch)	d1 (mm)	L (mm)	L1 (mm)	L2 (mm)	e (inch)	e1 (mm)	PSI	Part No.
2	63	113.0	60	53.0	0.140	5.8	130	153 911 211
3	90	141.5	74	67.5	0.206	5.1	130	153 911 313
4	110	156.5	81	75.5	0.265	6.3	130	153 911 414
6	160	204.0	109	95.0	0.390	9.1	130	153 911 617
8	225	241.5	124	117.5	0.507	12.8	130	153 911 820
10	250	261.0	132	129.0	0.632	14.2	130	153 911 921

Transition Reducing Tee IPS SDR17 x Metric SDR11



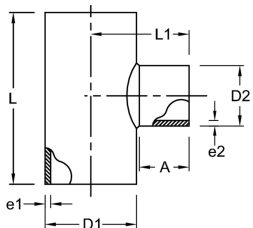
STYLE 1



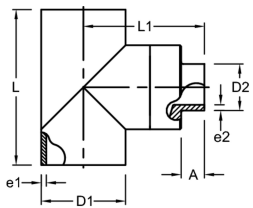
STYLE 2

D1 (inch)	D2 (mm)	L (inch)	L1 (inch)	A (inch)	PSI	Part No.
10	63	18	15	9	130	153 212 111
10	75	18	15	10	130	153 212 112
12	63	20	16	9	130	153 212 211
12	75	21	16	10	130	153 212 212
14	63	20	16	9	130	153 212 411
14	75	21	17	10	130	153 212 412
16	63	20	17	9	130	153 212 611
16	75	21	18	10	130	153 212 612
18	63	20	18	9	130	153 212 811
18	75	21	19	10	130	153 212 812
20	63	20	19	9	130	153 212 201
20	75	21	20	10	130	153 212 202
22	63	20	20	9	130	153 212 221
22	75	21	21	10	130	153 212 222
24	63	20	21	9	130	153 212 241
24	75	21	22	10	130	153 212 242

Transition Reducing Tee IPS SDR11 x Metric SDR17



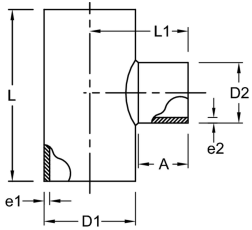
STYLE 1



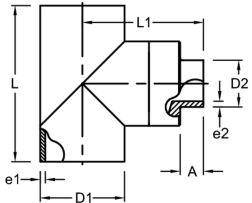
STYLE 2

D1 (inch)	D2 (mm)	L (inch)	L1 (inch)	PSI	Part No.
10	90	17.5	15.4	130	153 214 113
10	110	19.6	15.4	130	153 214 114
10	160	21.0	15.4	130	153 214 117
10	225	23.8	24.9	130	153 214 120
12	90	20.5	16.4	130	153 214 213
12	110	22.6	16.4	130	153 214 214
12	160	24.6	16.9	130	153 214 217
12	225	26.8	25.9	130	153 214 220
12	250	28.8	26.4	130	153 214 221
14	90	20.5	17.0	130	153 214 413
14	110	22.6	17.0	130	153 214 414
14	160	24.6	17.5	130	153 214 417
14	225	26.8	26.5	80	153 214 420
14	250	28.8	27.0	80	153 214 421
16	90	20.5	18.0	130	153 214 613
16	110	22.6	18.0	130	153 214 614
16	160	24.6	18.5	80	153 214 617
16	225	26.8	27.5	80	153 214 620
16	250	28.8	29.0	80	153 214 621

Transition Reducing Tee IPS SDR17 x Metric SDR17



STYLE 1



STYLE 2

D1	D2	L	L1	PSI	Part No.
(inch)	(inch)	(inch)	(inch)		
10	90	17.5	15.4	130	153 216 113
10	110	19.6	15.4	130	153 216 114
10	160	21.0	15.4	130	153 216 117
10	225	23.8	24.9	130	153 216 120
12	90	20.5	16.4	130	153 216 213
12	110	22.6	16.4	130	153 216 214
12	160	24.6	16.9	130	153 216 217
12	225	26.8	25.9	130	153 216 220
12	250	28.8	26.4	130	153 216 221
14	90	20.5	17.0	130	153 216 413
14	110	22.6	17.0	130	153 216 414
14	160	24.6	17.5	130	153 216 417
14	225	26.8	26.5	80	153 216 420
14	250	28.8	27.0	80	153 216 421
16	90	20.5	18.0	130	153 216 613
16	110	22.6	18.0	130	153 216 614
16	160	24.6	18.5	130	153 216 617
16	225	26.8	27.5	80	153 216 620
16	250	28.8	28.0	80	153 216 621
18	90	20.5	19.0	130	153 216 813
18	110	22.6	19.0	130	153 216 814
18	160	24.6	19.5	130	153 216 817
18	225	26.8	28.5	80	153 216 820
18	250	28.8	29.0	80	153 216 821
20	90	19.5	19.4	130	153 216 913
20	110	22.6	20.0	130	153 216 914
20	160	24.6	20.5	130	153 216 917
20	225	26.8	29.5	80	153 216 920
20	250	28.8	30.0	80	153 216 921
22	90	20.5	21.0	130	153 216 943
22	110	22.6	21.0	130	153 216 944
22	160	24.6	21.5	130	153 216 947
22	225	26.8	30.5	80	153 216 950
22	250	28.8	31.0	80	153 216 951
24	90	20.5	22.0	130	153 216 963
24	110	22.6	22.0	130	153 216 964
24	160	24.6	22.5	130	153 216 967
24	225	26.8	31.5	80	153 216 970
24	250	28.8	32.0	80	153 216 971



**Electrofusion Type 329 Branch Saddle Valve
w/ PP Type 546 Ball Valve and PE Metric Spigot End SDR11**

d (mm)	PSI	SDR	EPDM Part No.	FKM Part No.
63 - 20	150	11/17	153 329 206	153 329 406
63 - 25	150	11/17	153 329 207	153 329 407
63 - 32	150	11/17	153 329 208	153 329 408
63 - 40	150	11/17	153 329 209	153 329 409
63 - 50	150	11/17	153 329 210	153 329 410
63 - 63	150	11/17	153 329 211	153 329 411
75 - 20	150	11/17	153 329 286	153 329 486
75 - 25	150	11/17	153 329 287	153 329 487
75 - 40	150	11/17	153 329 289	153 329 489
75 - 50	150	11/17	153 329 290	153 329 490
75 - 63	150	11/17	153 329 291	153 329 491
75 - 32	150	11/17	153 329 288	153 329 488
90 - 20	150	11/17	153 329 216	153 329 416
90 - 25	150	11/17	153 329 217	153 329 417
90 - 32	150	11/17	153 329 218	153 329 418
90 - 40	150	11/17	153 329 219	153 329 419
90 - 50	150	11/17	153 329 220	153 329 420
90 - 63	150	11/17	153 329 221	153 329 421
110 - 20	150	11/17	153 329 226	153 329 426
110 - 25	150	11/17	153 329 227	153 329 427
110 - 32	150	11/17	153 329 228	153 329 428
110 - 40	150	11/17	153 329 229	153 329 429
110 - 50	150	11/17	153 329 230	153 329 430
110 - 63	150	11/17	153 329 231	153 329 431
160 - 20	150	11/17	153 329 236	153 329 436
160 - 25	150	11/17	153 329 237	153 329 437
160 - 32	150	11/17	153 329 238	153 329 438
160 - 40	150	11/17	153 329 239	153 329 439
160 - 50	150	11/17	153 329 240	153 329 440
160 - 63	150	11/17	153 329 241	153 329 441
225 - 20	150	11/17	153 329 246	153 329 446
225 - 25	150	11/17	153 329 247	153 329 447
225 - 32	150	11/17	153 329 248	153 329 448
225 - 40	150	11/17	153 329 249	153 329 449
225 - 50	150	11/17	153 329 250	153 329 450
225 - 63	150	11/17	153 329 251	153 329 451
250 - 20	150	11/17	153 329 256	153 329 456
250 - 25	150	11/17	153 329 257	153 329 457
250 - 32	150	11/17	153 329 258	153 329 458
250 - 40	150	11/17	153 329 259	153 329 459
250 - 50	150	11/17	153 329 260	153 329 460
250 - 63	150	11/17	153 329 261	153 329 461



**Electrofusion Type 329 Branch Saddle Valve
w/ PVC Type 546 Ball Valve Inch Socket**

Size (inch) <small>(inch)</small>	PSI	SDR	EPDM Part No.	FKM Part No.
63 - ½	150	11/17	153 329 306	153 329 506
63 - ¾	150	11/17	153 329 307	153 329 507
63 - 1	150	11/17	153 329 308	153 329 508
63 - 1 ¼	150	11/17	153 329 309	153 329 509
63 - 1 ½	150	11/17	153 329 310	153 329 510
63 - 2	150	11/17	153 329 311	153 329 511
75 - ½	150	11/17	153 329 386	153 329 586
75 - ¾	150	11/17	153 329 387	153 329 587
75 - 1	150	11/17	153 329 388	153 329 588
75 - 1 ¼	150	11/17	153 329 389	153 329 589
75 - 1 ½	150	11/17	153 329 390	153 329 590
75 - 2	150	11/17	153 329 391	153 329 591
90 - ½	150	11/17	153 329 316	153 329 516
90 - ¾	150	11/17	153 329 317	153 329 517
90 - 1	150	11/17	153 329 318	153 329 518
90 - 1 ¼	150	11/17	153 329 319	153 329 519
90 - 1 ½	150	11/17	153 329 320	153 329 520
90 - 2	150	11/17	153 329 321	153 329 521
110 - ½	150	11/17	153 329 326	153 329 526
110 - ¾	150	11/17	153 329 327	153 329 527
110 - 1	150	11/17	153 329 328	153 329 528
110 - 1 ¼	150	11/17	153 329 329	153 329 529
110 - 1 ½	150	11/17	153 329 330	153 329 530
110 - 2	150	11/17	153 329 331	153 329 531
160 - ½	150	11/17	153 329 336	153 329 536
160 - ¾	150	11/17	153 329 337	153 329 537
160 - 1	150	11/17	153 329 338	153 329 538
160 - 1 ¼	150	11/17	153 329 339	153 329 539
160 - 1 ½	150	11/17	153 329 340	153 329 540
160 - 2	150	11/17	153 329 341	153 329 541
225 - ½	150	11/17	153 329 346	153 329 546
225 - ¾	150	11/17	153 329 347	153 329 547
225 - 1	150	11/17	153 329 348	153 329 548
225 - 1 ¼	150	11/17	153 329 349	153 329 549
225 - 1 ½	150	11/17	153 329 350	153 329 550
225 - 2	150	11/17	153 329 351	153 329 551
250 - ½	150	11/17	153 329 356	153 329 556
250 - ¾	150	11/17	153 329 357	153 329 557
250 - 1	150	11/17	153 329 358	153 329 558
250 - 1 ¼	150	11/17	153 329 359	153 329 559
250 - 1 ½	150	11/17	153 329 360	153 329 560
250 - 2	150	11/17	153 329 361	153 329 561



**Electrofusion Type 329 Branch Saddle Valve
w/ ABS Type 546 Ball Valve Metric Socket**

d (mm)	PSI	SDR	EPDM Part No.	weight (kg)
63 - 20	150	11/17	153 329 706	0.001
63 - 25	150	11/17	153 329 707	0.001
63 - 32	150	11/17	153 329 708	0.001
63 - 40	150	11/17	153 329 709	0.001
63 - 50	150	11/17	153 329 710	0.001
63 - 63	150	11/17	153 329 711	0.001
75 - 20	150	11/17	153 329 786	0.001
75 - 25	150	11/17	153 329 787	0.001
75 - 32	150	11/17	153 329 788	0.001
75 - 40	150	11/17	153 329 789	0.001
75 - 50	150	11/17	153 329 790	0.001
75 - 63	150	11/17	153 329 791	0.001
90 - 20	150	11/17	153 329 716	0.001
90 - 25	150	11/17	153 329 717	0.001
90 - 32	150	11/17	153 329 718	0.001
90 - 40	150	11/17	153 329 719	0.001
90 - 50	150	11/17	153 329 720	0.001
90 - 63	150	11/17	153 329 721	0.001
110 - 20	150	11/17	153 329 726	0.001
110 - 25	150	11/17	153 329 727	0.001
110 - 32	150	11/17	153 329 728	0.001
110 - 40	150	11/17	153 329 729	0.001
110 - 50	150	11/17	153 329 730	0.001
110 - 63	150	11/17	153 329 731	0.001
160 - 20	150	11/17	153 329 736	0.001
160 - 25	150	11/17	153 329 737	0.001
160 - 32	150	11/17	153 329 738	0.001
160 - 40	150	11/17	153 329 739	0.001
160 - 50	150	11/17	153 329 740	0.001
160 - 63	150	11/17	153 329 741	0.001
225 - 20	150	11/17	153 329 746	0.001
225 - 25	150	11/17	153 329 747	0.001
225 - 32	150	11/17	153 329 748	0.001
225 - 40	150	11/17	153 329 749	0.001
225 - 50	150	11/17	153 329 750	0.001
225 - 63	150	11/17	153 329 751	0.001
250 - 20	150	11/17	153 329 756	0.001
250 - 25	150	11/17	153 329 757	0.001
250 - 32	150	11/17	153 329 758	0.001
250 - 40	150	11/17	153 329 759	0.001
250 - 50	150	11/17	153 329 760	0.001
250 - 63	150	11/17	153 329 761	0.001