

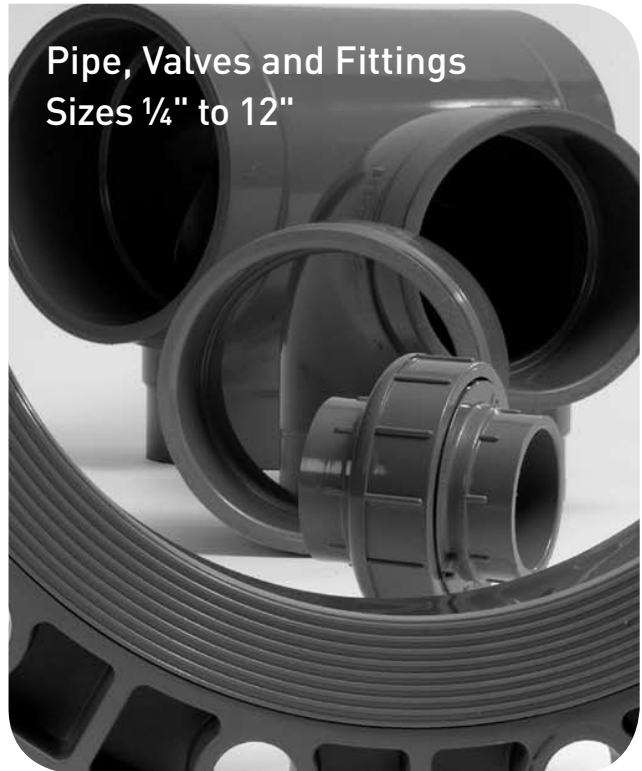
Section 2

Schedule 80 CPVC Piping System

Serviced by GF Little Rock

Effective March 27, 2006

Pipe, Valves and Fittings
Sizes 1/4" to 12"



GEORG FISCHER
PIPING SYSTEMS

Glossary

Std. Pack	=	Standard Carton Quantity
FPT	=	Female Pipe Thread
MPT	=	Male Pipe Thread
S	=	Tapered Socket
SPG	=	Spigot End (same dimension as pipe outside diameter)
HS	=	High Strength Design
SL	=	Streamline Design
XXXX-XXXFB	=	Assembled Fitting from Molded Components
XXXX-XXXH	=	Fabricated Fitting

Product Line	Descriptions	Discount
70	CPVC Pressure Pipe-20ft. Lengths Plain End	_____
25	CPVC Pressure Fittings - Molded	_____
34	CPVC Pressure Expansion Joint	_____
33	CPVC Pressure Brass Insert Fittings	_____
02	CPVC Pressure LD Fittings - Molded	_____
06	CPVC Pressure LD Fittings - Fabricated	_____
38	CPVC Type 546 True Union Ball Valve	_____
15	CPVC Type 375 True Union Ball Valve	_____
74	CPVC Type 567 Butterfly Valve	_____

The technical information given in this publication implies no warranty of any kind and is subject to change without notice. Please consult our Terms and Conditions of Sale.

Not for Use with Compressed Air or Gases

DO NOT TEST with Air or Air over Water

GF Piping DOES NOT RECOMMEND the use of thermoplastic piping products for systems to transport or store compressed air or gases, or the testing of thermoplastic piping systems with compressed air or gases in above or below ground locations. The use of GF Piping products in compressed air or gas systems automatically voids the warranty for such products, and their use against our recommendation is entirely the responsibility and liability of the installer. GF Piping will not accept responsibility for damage or impairment from its products, or other consequential or incidental damages caused by misapplication, incorrect assembly, and/or exposure to harmful substances or conditions.

For more information about any of our product lines, please call (501) 490-7777.

Table of Contents

Schedule 80 CPVC Piping System

Specifications, Standards and Tolerances	2.4
--	-----

Pipe (1/2"-12")	2.5
-----------------	-----

Fittings (1/4"-8")

Molded	2.6
Expansion Joint	2.18
Brass Insert	2.19

Large Diameter Fittings (10"-12")

Pressure Large Diameter Molded	2.20
Pressure Large Diameter Fabricated	2.21

Manual Valves

Type 546 and Type 375 ball valves	2.25
Type 567 butterfly valve	2.26

Specification Submittal Data Sheet	2.28
------------------------------------	------

Specifications, Standards and Tolerances

Specifications and Standards

NSF/ANSI Standard 14

NSF/ANSI Standard 61

ASTM D 1784 : Material CPVC Type IV, Grade I Gray (cell classification 23447-B)

ASTM F 441 : CPVC Schedule 80 Pipe

ASTM F 439 : CPVC Schedule 80 Socket & Threaded Fittings

ASTM F 437 : CPVC Schedule 80 Threaded Fittings

ASTM F 1970 : CPVC Schedule 80 Unions & Flanges

ANSI B16.5 : Flange Bolt Hole Patterns

ANSI B1.20.1 : CPVC Schedule 80 NPT Threads

CSA B137.6 : CPVC Schedule 80 Pipe (1¼" - 2½" only)

Molded Dimension Tolerances

A	Piston Position; Expansion Joints : ± 0.03
D	Outside Diameter : ± 0.06
G, G1	Intersections of centerlines to bottom of socket; 90° Ells, Tees : up to 4" ± 0.03 ; 6" and above ± 0.06
GJ, GN	Intersections of centerlines to bottom of socket; 45° Wyes : up to 4" ± 0.03 ; 6" and above ± 0.06
H, HJ, HN	Intersections of centerlines to face of fitting; 90° Ells, 45° Ells, Tees, 45° Wyes : up to 4" ± 0.03 ; 6" and above ± 0.06
HL	Socket Bottom to Face of Fitting : up to 4" ± 0.03 ; 6" and above ± 0.06
J	Intersections of centerlines to bottom of socket; 45° & 30° Ells : up to 4" ± 0.03 ; 6" and above ± 0.06
L	Overall Length of fitting : ± 0.06
N	Socket Bottom to Socket Bottom; Couplings, Unions : ± 0.06
N1	Socket Bottom to Face of Flange : ± 0.06
R	Thickness on Plugs, Flanges : ± 0.03
T, T1	Effective Thread Length : Reference Only
W	Height of Cap : ± 0.06

Fabricated Dimension Tolerances

D	Outside Diameter : ± 0.50
E	Drive Pin Diameter : ± 0.50
G, G1	Intersections of centerlines to bottom of socket; 90° Ells, Tees, Crosses : ± 0.25
GJ, GN	Intersections of centerlines to bottom of socket; 45° Wyes : ± 0.25
H, HJ, HN	Intersections of centerlines to face of fitting; 90° Ells, 45° Ells, Tees, 45° Wyes, True Wyes : ± 0.50
HL	Socket Bottom to Face of Fitting : ± 0.25
J	Intersections of centerlines to bottom of socket; 11¼°, 15°, 30°, 22½°, 45° Ells, True Wyes : ± 0.25
L	Overall Length of fitting : ± 0.50
N	Socket Bottom to Socket Bottom; Couplings : ± 0.50
N1	Socket Bottom to Face of Flange : ± 0.50
R	Thickness on Plugs, Flanges : ± 0.25
T, T1	Effective Thread Length : Reference Only
W	Height of Cap : ± 0.25

Schedule 80 CPVC Pressure Pipe

P/L 70 : CPVC Pressure Pipe - 20 ft. lengths Plain End

Size	Part Number Plain End	Lift Qty (ft.)	Average O.D.	Min. Wall	psi at 73° F
½	*C8008-005AB	5600 ft.	0.840	0.147	848
¾	*C8008-007AB	5000 ft.	1.050	0.154	688
1	*C8008-010AB	2360 ft	1.315	0.179	630
1¼	*C8008-012AB	1960 ft	1.660	0.191	520
1½	*C8008-015AB	1800 ft	1.900	0.200	471
2	*C8008-020AB	1060 ft	2.375	0.218	404
2½	*C8008-025AB	880 ft	2.875	0.276	425
3	*C8008-030AB	700 ft	3.500	0.300	375
4	*C8008-040AB	520 ft	4.500	0.337	324
6	*C8008-060AB	220 ft	6.625	0.432	279
8	*C8008-080AB	100 ft	8.625	0.500	246
10	*C8008-100AB	80 ft	10.750	0.593	230
12	*C8008-120AB	60 ft	12.750	0.687	230

Schedule 80 CPVC

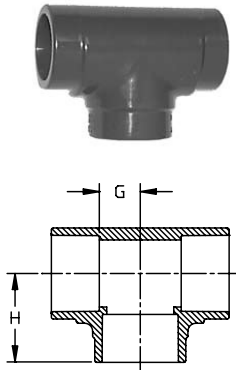
^ = 40% Restock Charge

* = Non-Cancelable / Non-Returnable

Dimensions are subject to change. Please see online "Price Lists" at <http://www.gfpiping.com> for up-to-date information.

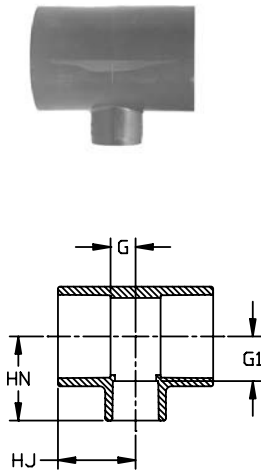
Schedule 80 CPVC Pressure Fittings

P/L 25 : CPVC Pressure Fittings - Molded



Tee (S x S x S)

Size	Part Number	Std Pack	H	G	Design
1/2	9801-005	25	1.49	0.50	SL
3/4	9801-007	25	1.61	0.56	SL
1	9801-010	20	1.86	0.72	SL
1 1/4	9801-012	5	2.19	0.91	HS
1 1/2	9801-015	5	2.44	1.06	HS
2	9801-020	5	2.82	1.32	HS
2 1/2	9801-025	5	3.33	1.50	HS
3	9801-030	5	3.75	1.85	HS
4	9801-040	5	4.63	2.38	HS
6	9801-060	2	6.63	3.55	HS
8	9801-080	1	8.63	4.59	HS

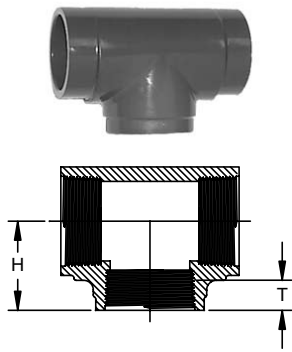


Reducing Tee (S x S x S)

Size	Part Number	Std Pack	HJ	HN	G	G1	Design
3/4x1/2	9801-101	25	1.63	1.63	0.61	0.73	SL
1x1/2	9801-130	25	1.88	1.63	0.73	0.75	SL
1x3/4	9801-131	20	1.88	1.87	0.73	0.86	SL
1 1/4x1	9801-168	20	2.00	2.00	0.73	0.91	SL
1 1/2x1/2	*9801-209FB	5	2.41	2.70	1.03	1.82	SL
1 1/2x3/4	9801-210	5	2.00	2.00	0.61	1.05	SL
1 1/2x1	9801-211	5	2.13	2.20	0.73	0.81	SL
2x1/2	*9801-247FB	5	2.78	3.06	1.28	1.22	SL
2x3/4	9801-248	5	2.13	2.31	0.73	1.29	SL
2x1	9801-249	5	2.25	2.44	0.73	1.26	SL
2x1 1/2	9801-251	5	2.56	2.69	1.05	1.29	SL
3x2	9801-338	5	3.21	3.40	1.31	1.87	SL
4x2	9801-420	5	3.52	3.88	1.26	2.37	SL
4x3	9801-422	5	4.15	4.31	1.87	2.39	SL
6x2	*9801-528FB	1	6.58	7.21	3.56	5.65	HS
6x3	*9801-530FB	2	6.58	7.21	3.56	5.26	HS
6x4	9801-532	2	6.58	6.81	3.49	4.50	HS
8x6	9801-585	1	7.63	7.59	3.59	3.56	HS

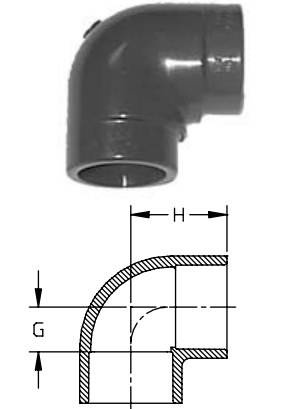
HS = High Strength Design
SL = Slim Line Design

Dimensions are subject to change. Please see online "Price Lists" at <http://www.gfpiping.com> for up-to-date information.



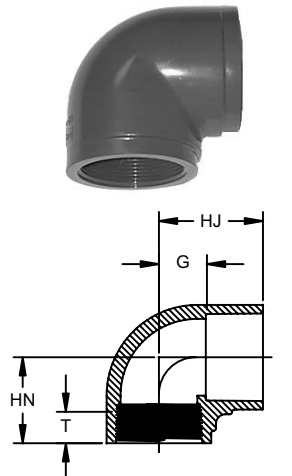
Tee (FPT x FPT x FPT)

Size	Part Number	Std. Pack	H	T	Design
1/4	^9805-002	50	0.92	0.40	HS
3/8	^9805-003	50	1.16	0.41	HS
1/2	^9805-005	25	1.27	0.53	HS
3/4	^9805-007	25	1.38	0.55	HS
1	^9805-010	15	1.70	0.68	HS
1 1/4	^9805-012	10	1.93	0.71	HS
1 1/2	^9805-015	5	2.08	0.72	HS
2	^9805-020	5	2.35	0.76	HS
2 1/2	^9805-025	5	2.88	1.14	HS
3	^9805-030	5	3.50	1.20	HS
4	^9805-040	5	4.06	1.30	HS



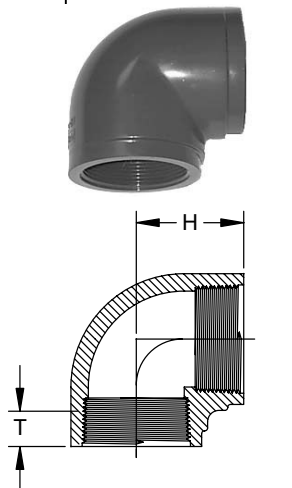
90° Ell (S x S)

Size	Part Number	Std. Pack	H	G	Design
1/4	9806-002	50	0.95	0.33	HS
3/8	9806-003	50	1.17	0.41	HS
1/2	9806-005	25	1.41	0.50	SL
3/4	9806-007	25	1.61	0.56	SL
1	9806-010	10	1.86	0.69	SL
1 1/4	9806-012	10	2.16	0.91	HS
1 1/2	9806-015	10	2.41	1.03	HS
2	9806-020	5	2.78	1.28	HS
2 1/2	9806-025	5	3.29	1.53	HS
3	9806-030	5	3.75	1.85	HS
4	9806-040	5	4.59	2.34	HS
6	9806-060	1	6.70	3.51	HS
8	9806-080	1	8.52	4.47	HS



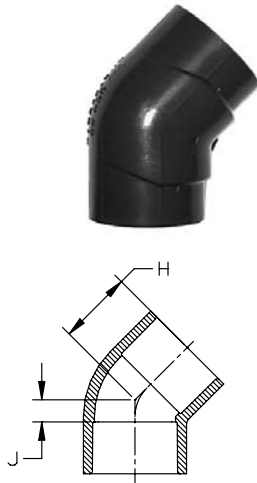
90° Ell (S x FPT)

Size	Part Number	Std. Pack	HJ	HN	G	T	Design
1/2	9807-005	25	1.38	1.28	0.50	0.53	HS
3/4	9807-007	25	1.57	1.38	0.56	0.55	HS
1	9807-010	10	1.82	1.70	0.69	0.68	HS



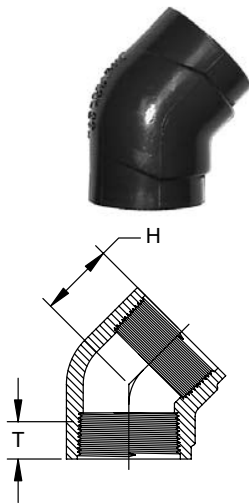
90° Ell (FPT x FPT)

Size	Part Number	Std. Pack	H	T	Design
1/4	^9808-002	50	0.92	0.40	HS
3/8	^9808-003	50	1.00	0.41	HS
1/2	^9808-005	25	1.29	0.53	HS
3/4	^9808-007	20	1.38	0.55	HS
1	^9808-010	10	1.70	0.68	HS
1 1/4	^9808-012	10	1.93	0.71	HS
1 1/2	^9808-015	10	2.06	0.72	HS
2	^9808-020	5	2.36	0.76	HS
3	^9808-030	5	3.50	1.20	HS
4	^9808-040	5	4.13	1.30	HS



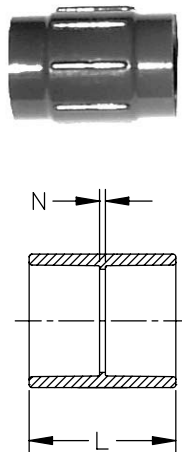
45° Ell (S x S)

Size	Part Number	Std. Pack	H	J	Design
¼	9817-002	50	0.81	0.13	HS
⅜	9817-003	50	0.94	0.19	HS
½	9817-005	25	1.21	0.25	SL
¾	9817-007	20	1.32	0.33	SL
1	9817-010	25	1.47	0.29	SL
1¼	9817-012	15	1.68	0.38	HS
1½	9817-015	10	1.88	0.44	HS
2	9817-020	5	2.16	0.60	SL
2½	9817-025	5	2.48	0.65	HS
3	9817-030	5	2.68	0.73	HS
4	9817-040	5	3.24	0.95	SL
6	9817-060	1	4.83	1.73	HS
8	9817-080	1	6.08	1.98	HS



45° Ell (FPT x FPT)

Size	Part Number	Std. Pack	H	T	Design
¼	^9819-002	50	0.76	0.40	HS
⅜	^9819-003	50	0.94	0.41	HS
½	^9819-005	25	1.02	0.53	HS
¾	^9819-007	20	1.14	0.55	HS
1	^9819-010	25	1.33	0.68	HS
1¼	^9819-012	15	1.40	0.71	HS
1½	^9819-015	10	1.52	0.72	HS
2	^9819-020	5	1.72	0.76	HS
3	^9819-030	5	2.44	1.20	HS
4	^9819-040	5	2.77	1.30	HS

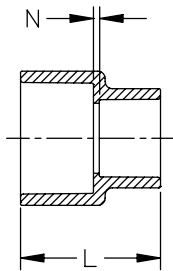
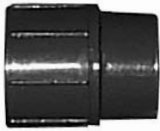


Coupling (S x S)

Size	Part Number	Std. Pack	L	N	Design
¼	9829-002	50	1.39	0.14	HS
⅜	9829-003	50	1.64	0.14	HS
½	9829-005	25	1.93	0.13	SL
¾	9829-007	20	2.18	0.13	SL
1	9829-010	25	2.41	0.13	SL
1¼	9829-012	10	2.78	0.16	HS
1½	9829-015	10	3.03	0.16	HS
2	9829-020	5	3.28	0.16	HS
2½	9829-025	5	3.75	0.16	HS
3	9829-030	5	4.04	0.25	SL
4	9829-040	5	4.79	0.25	SL
6	9829-060	2	6.41	0.34	HS
8	9829-080	2	8.40	0.34	HS

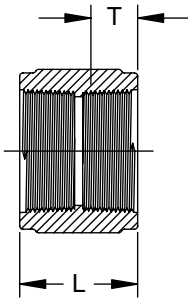
HS = High Strength Design
SL = Slim Line Design

Dimensions are subject to change. Please see online "Price Lists" at <http://www.gfpiping.com> for up-to-date information.



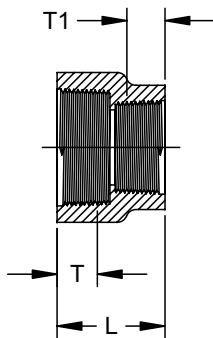
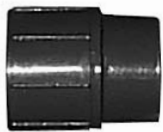
Reducing Coupling (S x S)

Size	Part Number	Std. Pack	L	N	Design
3/4 x 1/2	9829-101	25	2.16	0.14	HS
1 x 1/2	9829-130	25	2.12	0.09	HS
1 x 3/4	9829-131	25	2.26	0.12	HS
1 1/2 x 1/2	*9829-209FB	1	3.34	0.17	HS
1 1/2 x 3/4	*9829-210FB	1	3.34	0.17	HS
1 1/2 x 1	9829-211	15	2.66	0.10	HS
1 1/2 x 1 1/4	9829-212	20	2.82	0.10	HS
2 x 1/2	*9829-247FB	1	3.35	0.88	HS
2 x 3/4	*9829-248FB	1	3.36	0.77	HS
2 x 1	*9829-249FB	1	3.35	0.66	HS
2 x 1 1/4	*9829-250FB	1	3.37	0.52	HS
2 x 1 1/2	9829-251	5	3.05	0.10	HS
2 1/2 x 1 1/2	9829-291	1	3.30	0.13	HS
3 x 2	9829-338	5	3.61	0.16	HS
4 x 2	*9829-420FB	1	4.94	1.12	HS
4 x 3	9829-422	5	4.39	0.26	HS
6 x 4	9829-532	2	10.25	3.50	HS
8 x 6	9829-585	2	9.12	2.07	HS



Coupling (FPT x FPT)

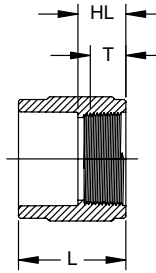
Size	Part Number	Std. Pack	L	T	Design
1/4	^9830-002	50	1.30	0.40	HS
3/8	^9830-003	50	1.34	0.41	HS
1/2	^9830-005	25	1.66	0.53	HS
3/4	^9830-007	20	1.73	0.55	HS
1	^9830-010	25	2.10	0.68	HS
1 1/4	^9830-012	10	2.19	0.71	HS
1 1/2	^9830-015	10	2.22	0.72	HS
2	^9830-020	5	2.29	0.76	HS
3	^9830-030	5	3.57	1.20	HS
4	^9830-040	5	3.73	1.30	HS



Reducing Coupling (FPTxFPT)

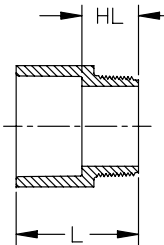
Size	Part Number	Std. Pack	L	T	T1	Design
1/2 x 1/4	^9830-072	50	1.45	0.53	0.40	HS
1/2 x 3/8	^9830-073	50	1.46	0.53	0.41	HS
3/4 x 1/2	^9830-101	25	1.69	0.55	0.53	HS
1 x 1/2	^9830-130	25	1.83	0.68	0.53	HS
1 x 3/4	^9830-131	25	1.88	0.68	0.55	HS
1 1/2 x 1	^9830-211	20	1.91	0.71	0.55	HS

Dimensions are subject to change. Please see online "Price Lists" at <http://www.gfpiping.com> for up-to-date information.



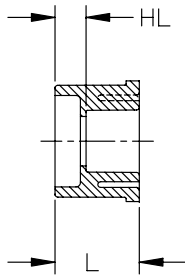
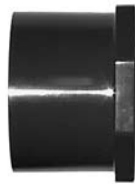
Female Adapter (SxFPT)

Size	Part Number	Std. Pack	HL	L	T	Design
¼	9835-002	50	0.75	1.43	0.40	HS
½	9835-005	25	0.91	1.79	0.53	HS
¾	9835-007	20	0.95	1.96	0.55	HS
1	9835-010	25	1.11	2.26	0.68	HS
1¼	9835-012	10	1.16	2.44	0.71	HS
1½	9835-015	10	1.19	2.58	0.72	HS
2	9835-020	5	1.23	2.74	0.76	HS
3	9835-030	5	1.91	3.82	1.20	HS
4	9835-040	5	2.02	4.29	1.30	HS



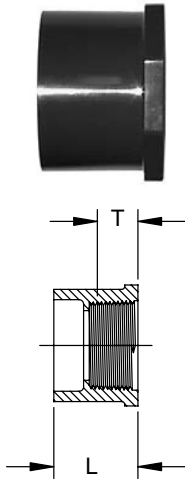
Male Adapter (SxMPT)

Size	Part Number	Std. Pack	HL	L	Design
½	9836-005	50	0.98	1.86	HS
¾	9836-007	25	1.00	2.04	HS
1	9836-010	25	1.21	2.39	HS
1¼	9836-012	15	1.29	2.56	HS
1½	9836-015	15	1.32	2.72	HS
2	9836-020	5	1.35	2.88	HS
3	9836-030	5	2.02	3.92	HS
4	9836-040	1	2.08	4.40	HS



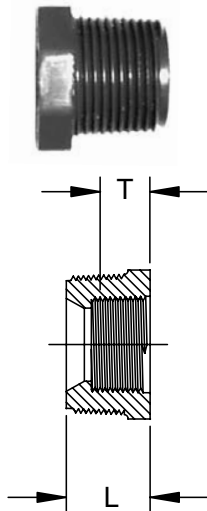
Flush Style Reducer Bushing (SpgxS)

Size	Part Number	Std. Pack	HL	L
½ x ¼	9837-072	50	0.46	1.14
½ x ⅜	9837-073	50	0.32	1.10
¾ x ½	9837-101	50	0.40	1.29
1 x ½	9837-130	50	0.54	1.42
1 x ¾	9837-131	50	0.44	1.42
1¼ x ½	9837-166	25	0.66	1.56
1¼ x ¾	9837-167	25	0.55	1.57
1¼ x 1	9837-168	25	0.42	1.57
1½ x ½	9837-209	25	0.77	1.68
1½ x ¾	9837-210	25	0.67	1.69
1½ x 1	9837-211	25	0.55	1.68
1½ x 1¼	9837-212	25	0.42	1.70
2 x ½	9837-247	10	0.88	1.79
2 x ¾	9837-248	25	0.78	1.81
2 x 1	9837-249	25	0.66	1.81
2 x 1¼	9837-250	10	0.56	1.82
2 x 1½	9837-251	10	0.40	1.80
2½ x 1½	9837-291	5	0.96	2.43
2½ x 2	9837-292	5	0.55	2.13
3 x 1½	9837-337	5	0.92	2.43
3 x 2	9837-338	5	0.87	2.43
3 x 2½	9837-339	5	0.39	2.23
4 x 2	9837-420	5	1.15	2.72
4 x 3	9837-422	5	0.77	2.76
6 x 3	9837-530	2	1.45	3.59
6 x 4	9837-532	2	2.57	6.92
8 x 6	9837-585	1	1.56	4.66



Flush Style Reducer Bushing (SpgxFPT)

Size	Part Number	Std. Pack	L	T
1/2 x 1/4	9838-072	50	1.14	0.40
1/2 x 3/8	9838-073	50	1.12	0.41
3/4 x 1/4	9838-098	50	1.21	0.40
3/4 x 1/2	9838-101	50	1.28	0.53
1 x 1/2	9838-130	50	1.42	0.53
1 x 3/4	9838-131	50	1.41	0.55
1 1/4 x 1/2	9838-166	15	1.53	0.53
1 1/4 x 3/4	9838-167	15	1.56	0.55
1 1/4 x 1	9838-168	15	1.55	0.68
1 1/2 x 1/2	9838-209	15	1.68	0.53
1 1/2 x 3/4	9838-210	15	1.68	0.55
1 1/2 x 1	9838-211	15	1.69	0.68
1 1/2 x 1 1/4	9838-212	15	1.68	0.71
2 x 1/2	9838-247	25	1.80	0.53
2 x 3/4	9838-248	10	1.80	0.55
2 x 1	9838-249	10	1.79	0.68
2 x 1 1/4	9838-250	10	1.78	0.71
2 x 1 1/2	9838-251	10	1.79	0.72
2 1/2 x 1 1/2	9838-291	5	2.11	0.72
2 1/2 x 2	9838-292	5	2.20	0.76
3 x 2	9838-338	5	2.44	0.76
4 x 2	9838-420	5	2.73	0.76
4 x 3	9838-422	5	2.75	0.38



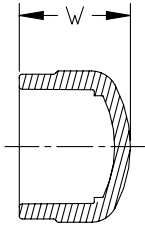
Flush Style Reducer Bushing (MPTxFPT)

Size	Part Number	Std. Pack	L	T
3/8 x 1/4	^9839-052	50	0.79	0.40
1/2 x 1/4	^9839-072	50	0.96	0.40
1/2 x 3/8	^9839-073	50	0.94	0.41
3/4 x 3/8	^9839-099	50	1.02	0.41
3/4 x 1/2	^9839-101	50	1.08	0.53
1 x 1/2	^9839-130	25	1.24	0.53
1 x 3/4	^9839-131	50	1.27	0.55
1 1/4 x 1	^9839-168	25	1.30	0.68
1 1/2 x 3/4	^9839-210	25	1.33	0.55
1 1/2 x 1	^9839-211	50	1.34	0.68
1 1/2 x 1 1/4	^9839-212	10	1.32	0.71
2 x 1	^9839-249	10	1.43	0.68
2 x 1 1/4	^9839-250	10	1.43	0.71
2 x 1 1/2	^9839-251	10	1.35	0.72

^ = 40% Restock Charge

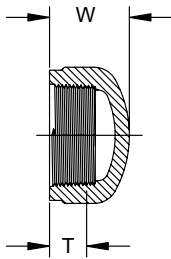
* = Non-Cancelable / Non-Returnable

Dimensions are subject to change. Please see online "Price Lists" at <http://www.gfpiping.com> for up-to-date information.



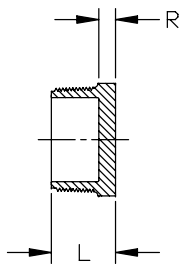
Cap (S)

Size	Part Number	Std. Pack	W	Design
1/2	9847-005	50	1.29	HS
3/4	9847-007	25	1.46	HS
1	9847-010	25	1.67	HS
1 1/4	9847-012	15	1.88	HS
1 1/2	9847-015	10	2.09	HS
2	9847-020	5	2.32	HS
2 1/2	9847-025	5	2.73	HS
3	9847-030	5	3.05	HS
4	9847-040	5	3.67	HS
6	9847-060	2	4.96	HS
8	9847-080	2	7.02	HS



Cap (FPT)

Size	Part Number	Std. Pack	W	T	Design
1/4	^9848-002	50	0.93	0.40	HS
3/8	^9848-003	50	0.95	0.41	HS
1/2	^9848-005	50	1.16	0.53	HS
3/4	^9848-007	25	1.24	0.55	HS
1	^9848-010	25	1.50	0.68	HS
1 1/4	^9848-012	15	1.61	0.71	HS
1 1/2	^9848-015	10	1.66	0.72	HS
2	^9848-020	5	1.84	0.76	HS



Plug (MPT)

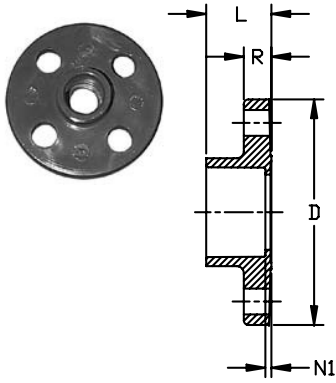
Size	Part Number	Std. Pack	L	R
1/4	9850-002	50	0.81	0.22
3/8	9850-003	50	0.83	0.22
1/2	9850-005	50	0.97	0.22
3/4	9850-007	50	1.04	0.25
1	9850-010	25	1.25	0.27
1 1/2	9850-015	20	1.38	0.34
2	9850-020	10	1.46	0.40
3	9850-030	5	2.00	0.38
4	9850-040	5	2.15	0.39

HS = High Strength Design
SL = Slim Line Design

^ = 40% Restock Charge

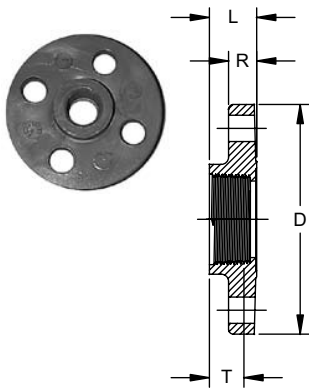
* = Non-Cancelable / Non-Returnable

Dimensions are subject to change. Please see online "Price Lists" at <http://www.gfpiping.com> for up-to-date information.



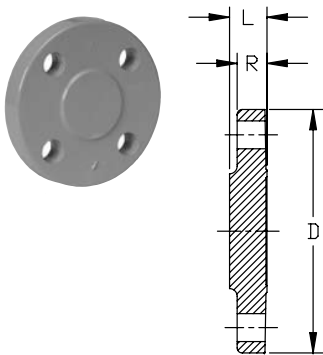
Flange (S)

Size	Part Number	Std. Pack	# of Holes	Bolt Dia.	Bolt Circle Dia.	D	L	N1	R
1/2	9851-005	5	4	1/2	2.38	3.50	1.03	0.15	0.44
3/4	9851-007	5	4	1/2	2.75	3.88	1.21	0.19	0.51
1	9851-010	5	4	1/2	3.13	4.25	1.28	0.15	0.55
1 1/4	9851-012	5	4	1/2	3.50	4.63	1.42	0.16	0.63
1 1/2	9851-015	5	4	1/2	3.88	5.00	1.54	0.16	0.72
2	9851-020	5	4	5/8	4.75	6.00	1.77	0.16	0.75
2 1/2	9851-025	5	4	5/8	5.50	7.00	2.01	0.19	0.80
3	9851-030	5	4	5/8	6.00	7.50	2.20	0.31	0.98
4	9851-040	5	8	5/8	7.50	9.00	2.55	0.22	1.24
6	9851-060	1	8	3/4	9.50	11.00	3.86	0.34	1.32



Flange (FPT)

Size	Part Number	Std. Pack	# of Holes	Bolt Dia.	Bolt Circle Dia.	D	L	T	R
1/2	^9852-005	5	4	1/2	2.38	3.50	0.94	0.53	0.44
3/4	^9852-007	5	4	1/2	2.75	3.88	0.95	0.55	0.51
1	^9852-010	5	4	1/2	3.13	4.25	1.13	0.68	0.55
1 1/2	^9852-015	5	4	1/2	3.88	5.00	1.21	0.72	0.72
2	^9852-020	5	4	5/8	4.75	6.00	1.23	0.76	0.75
3	^9852-030	5	4	5/8	6.00	7.50	1.88	1.20	0.98
4	^9852-040	5	8	5/8	7.50	9.00	1.99	1.30	1.24



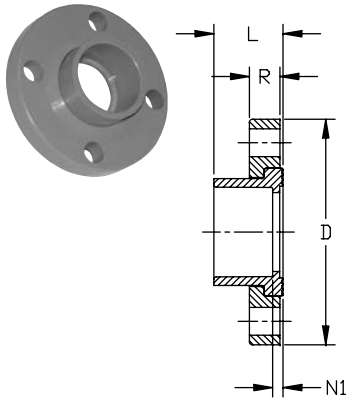
Flange (Blind)

Size	Part Number	Std. Pack	# of Holes	Bolt Dia.	Bolt Circle Dia.	D	L	R
1/2	9853-005	5	4	1/2	2.38	3.50	1.03	0.57
3/4	9853-007	5	4	1/2	2.75	3.88	1.15	0.58
1	9853-010	5	4	1/2	3.13	4.25	0.66	0.66
1 1/4	9853-012	5	4	1/2	3.50	4.63	1.45	0.69
1 1/2	9853-015	5	4	1/2	3.88	5.00	1.59	0.76
2	9853-020	5	4	5/8	4.75	6.00	1.76	0.82
3	9853-030	5	4	5/8	6.00	7.50	2.25	1.02
4	9853-040	5	8	5/8	7.50	9.00	2.65	1.11
6	9853-060	1	8	3/4	9.50	11.00	3.45	1.37
8	9853-080	1	8	3/4	11.75	13.50	4.50	1.73

^ = 40% Restock Charge

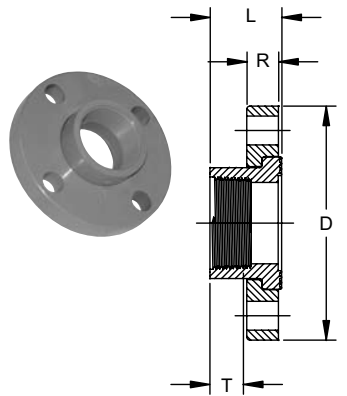
* = Non-Cancelable / Non-Returnable

Dimensions are subject to change. Please see online "Price Lists" at <http://www.gfpiping.com> for up-to-date information.



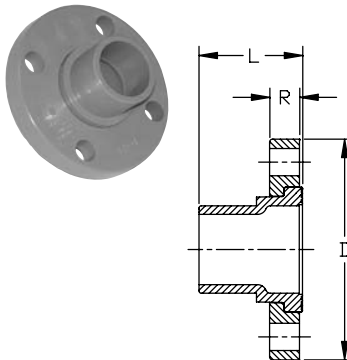
Van Stone Flange (S)

Size	Part Number	Std. Pack	# of Holes	Bolt Dia.	Bolt Circle Dia.	D	L	N1	R
1/2	9854-005	5	4	1/2	2.38	3.50	1.03	0.11	0.57
3/4	9854-007	5	4	1/2	2.75	3.88	1.15	0.13	0.58
1	9854-010	5	4	1/2	3.13	4.25	0.66	0.11	0.66
1 1/4	9854-012	5	4	1/2	3.50	4.63	1.45	0.14	0.69
1 1/2	9854-015	5	4	1/2	3.88	5.00	1.59	0.15	0.76
2	9854-020	5	4	5/8	4.75	6.00	1.76	0.20	0.82
2 1/2	9854-025	5	4	5/8	5.50	7.00	2.05	0.22	0.98
3	9854-030	5	4	5/8	6.00	7.50	2.25	0.30	1.02
4	9854-040	5	8	5/8	7.50	9.00	2.65	0.34	1.11
6	9854-060	1	8	3/4	9.50	11.00	3.45	0.35	1.37
8	9854-080	1	8	3/4	11.75	13.50	4.50	0.40	1.73



Van Stone Flange (FPT)

Size	Part Number	Std. Pack	# of Holes	Bolt Dia.	Bolt Circle Dia.	D	L	T	R
1	^9855-010	5	4	1/2	3.13	4.25	1.375	0.68	0.66
1 1/4	^9855-012	5	4	1/2	3.50	4.63	1.448	0.71	0.69
1 1/2	^9855-015	5	4	1/2	3.88	5.00	1.608	0.72	0.76
2	^9855-020	5	4	5/8	4.75	6.00	1.75	0.76	0.82



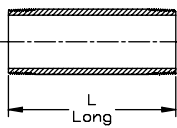
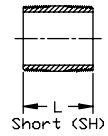
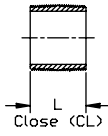
Van Stone Flange (Spg)

Size	Part Number	Std. Pack	# of Holes	Bolt Dia.	Bolt Circle Dia.	D	L	R
1/2	9856-005	5	4	1/2	2.38	3.50	1.65	0.57
3/4	9856-007	5	4	1/2	2.75	3.88	1.78	0.58
1	9856-010	5	4	1/2	3.13	4.25	2.02	0.66
1 1/4	9856-012	5	4	1/2	3.50	4.63	2.20	0.69
1 1/2	9856-015	5	4	1/2	3.88	5.00	2.40	0.76
2	9856-020	5	4	5/8	4.75	6.00	2.72	0.82
2 1/2	9856-025	5	4	5/8	5.50	7.00	3.19	0.98
3	9856-030	5	4	5/8	6.00	7.50	3.52	1.02
4	9856-040	5	8	5/8	7.50	9.00	4.02	1.11

^ = 40% Restock Charge

* = Non-Cancelable / Non-Returnable

Dimensions are subject to change. Please see online "Price Lists" at <http://www.gfpiping.com> for up-to-date information.



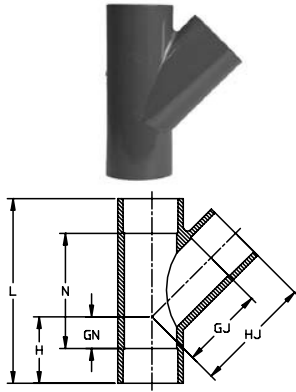
Nipple (MPT x MPT)

Size	Part Number	Std. Pack	L
1/2 x CL	*9861-077	50	1.13
1/2 x SH	*9861-015	50	1.13
1/2 x 2	*9861-079	50	2.00
1/2 x 3	*9861-081	50	3.00
1/2 x 4	*9861-082	50	4.00
1/2 x 5	*9861-083	50	5.00
1/2 x 6	*9861-084	50	6.00
3/4 x CL	*9861-104	25	1.38
3/4 x 2	*9861-020	25	2.00
3/4 x 3	*9861-106	25	3.00
3/4 x 4	*9861-107	25	4.00
3/4 x 5	*9861-108	25	5.00
3/4 x 6	*9861-109	25	6.00
1 x CL	*9861-133	25	1.50
1 x SH	*9861-134	25	2.00
1 x 3	*9861-135	25	3.00
1 x 4	*9861-136	25	4.00
1 x 5	*9861-137	25	5.00
1 x 6	*9861-138	25	6.00
1 1/4 x CL	*9861-170	25	1.63
1 1/4 x SH	*9861-171	25	2.50
1 1/4 x 3	*9861-172	25	3.00
1 1/4 x 4	*9861-173	25	4.00
1 1/4 x 5	*9861-174	25	5.00
1 1/4 x 6	*9861-175	25	6.00
1 1/2 x CL	*9861-213	25	1.75
1 1/2 x SH	*9861-214	25	2.50
1 1/2 x 3	*9861-215	25	3.00
1 1/2 x 4	*9861-216	25	4.00
1 1/2 x 5	*9861-217	25	5.00
1 1/2 x 6	*9861-218	25	6.00
2 x CL	*9861-251	25	2.00
2 x SH	*9861-252	25	2.50
2 x 3	*9861-253	25	3.00
2 x 4	*9861-254	25	4.00
2 x 5	*9861-255	25	5.00
2 x 6	*9861-256	25	6.00
2 1/2 x CL	*9861-291	5	2.50
2 1/2 x SH	*9861-292	5	3.00
2 1/2 x 4	*9861-295	5	4.00
2 1/2 x 5	*9861-296	5	5.00
2 1/2 x 6	*9861-297	5	6.00
3 x CL	*9861-338	5	2.63
3 x SH	*9861-340	5	3.00
3 x 4	*9861-341	5	4.00
3 x 5	*9861-342	5	5.00
3 x 6	*9861-343	5	6.00
4 x CL	*9861-422	5	2.88
4 x SH	*9861-423	5	4.00
4 x 5	*9861-425	5	5.00
4 x 6	*9861-426	5	6.00

^ = 40% Restock Charge

* = Non-Cancelable / Non-Returnable

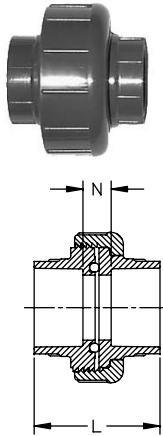
Dimensions are subject to change. Please see online "Price Lists" at <http://www.gfpiping.com> for up-to-date information.



45° Wye (SxSxS)

Size	Part Number	Std. Pack	GJ	GN	H	HJ	L	N	Design
1½	*9870-015	20	2.56	0.47	1.47	1.97	5.81	2.59	HS
2	*9870-020	10	3.19	0.63	2.13	4.69	6.88	3.19	HS
3	9870-030	4	4.85	1.91	3.81	6.75	10.46	6.65	SL
4	9870-040	4	6.38	1.84	4.20	8.75	12.96	8.25	SL
6	9870-060	1	8.50	1.81	4.86	11.59	16.50	10.39	HS
6 x 4	9870-532	1	7.18	1.87	4.91	9.45	16.50	10.39	HS

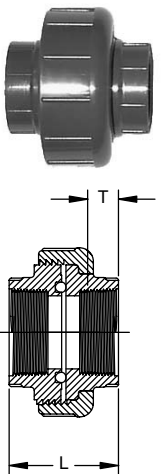
Rated 150psi at 73°F



Union (SxS)

Size	Part Number	Std. Pack	L	N
¼	9897-002	25	1.61	0.76
⅜	9897-003	25	1.91	0.77
½	9897-005	25	2.31	0.95
¾	9897-007	5	2.58	1.08
1	9897-010	5	2.89	1.25
1¼	9897-012	5	3.23	1.32
1½	9897-015	5	3.44	1.32
2	9897-020	2	3.77	1.51
3	9897-030	1	4.74	2.00
4	9897-040	1	5.62	2.05

O-Ring Material: EPDM



Union (FPTxFPT)

Size	Part Number	Std. Pack	L	T
⅜	^9898-003	25	1.58	0.41
½	^9898-005	25	2.03	0.53
¾	^9898-007	5	2.11	0.55
1	^9898-010	5	2.56	0.68
1¼	^9898-012	5	2.79	0.71
1½	^9898-015	5	2.72	0.72
2	^9898-020	2	2.89	0.76
3	^9898-030	1	4.69	1.20
4	^9898-040	1	5.62	1.30

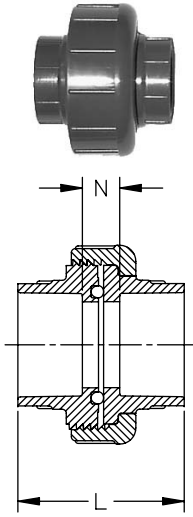
O-Ring Material: EPDM

HS = High Strength Design
SL = Slim Line Design

^ = 40% Restock Charge

* = Non-Cancelable / Non-Returnable

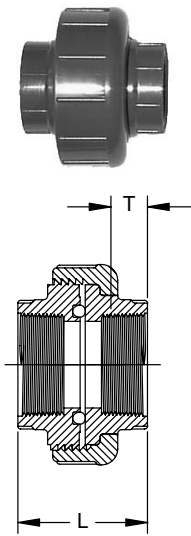
Dimensions are subject to change. Please see online "Price Lists" at <http://www.gfpiping.com> for up-to-date information.



Union (SxS)

Size	Part Number	Std. Pack	L	N
1/4	9857-002	25	1.61	0.76
3/8	9857-003	25	1.91	0.77
1/2	9857-005	25	2.31	0.95
3/4	9857-007	5	2.58	1.08
1	9857-010	5	2.89	1.25
1 1/4	9857-012	5	3.23	1.32
1 1/2	9857-015	5	3.44	1.32
2	9857-020	2	3.77	1.51
3	9857-030	1	4.74	2.00
4	9857-040	1	5.62	2.05

O-Ring Material: FPM



Union (FPTxFPT)

Size	Part Number	Std. Pack	L	T
3/8	^9858-003	25	1.58	0.41
1/2	^9858-005	25	2.03	0.53
3/4	^9858-007	5	2.11	0.55
1	^9858-010	5	2.56	0.68
1 1/4	^9858-012	5	2.79	0.71
1 1/2	^9858-015	5	2.72	0.72
2	^9858-020	2	2.89	0.76
3	^9858-030	1	4.69	1.20
4	^9858-040	1	5.62	1.30

O-Ring Material: FPM

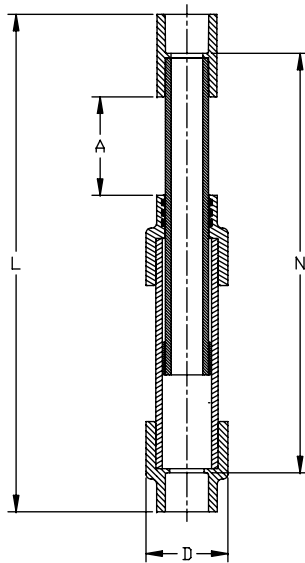
- ^ = 40% Restock Charge
- * = Non-Cancelable / Non-Returnable

Dimensions are subject to change. Please see online "Price Lists" at <http://www.gfpiping.com> for up-to-date information.

Schedule 80 CPVC Expansion Joint

P/L 34 : CPVC Pressure Expansion Joint

Flanged, spigot and threaded ends available. Contact factory for pricing and availability.



Expansion Joint 6" Travel (SxS)

Size	Part Number	Std. Pack	A	D	L	N
1/2	*9826-005X6	1	3.00	1.85	13.93	12.06
3/4	*9826-007X6	1	3.00	2.23	14.40	12.46
1	*9826-010X6	1	3.00	2.50	15.02	12.58
1 1/4	*9826-012X6	1	3.00	2.50	15.81	13.05
1 1/2	*9826-015X6	1	3.00	3.50	16.08	13.13
2	*9826-020X6	1	3.00	4.39	18.10	14.88
3	*9826-030X6	1	3.00	5.53	19.83	15.79
4	*9826-040X6	1	3.00	7.93	27.56	23.01
6	*9826-060X6	1	3.00	9.97	27.88	21.75

O-Ring Material: EPDM

Expansion Joint 12" Travel (SxS)

Size	Part Number	Std. Pack	A	D	L	N
1/2	*9826-005X12	1	6.00	1.85	22.93	21.06
3/4	*9826-007X12	1	6.00	2.23	23.40	21.46
1	*9826-010X12	1	6.00	2.50	24.02	21.58
1 1/4	*9826-012X12	1	6.00	2.50	24.81	22.05
1 1/2	*9826-015X12	1	6.00	3.50	25.08	22.13
2	*9826-020X12	1	6.00	4.39	27.10	23.88
3	*9826-030X12	1	6.00	5.53	28.83	24.79
4	*9826-040X12	1	6.00	7.93	36.56	32.01
6	*9826-060X12	1	6.00	9.97	36.88	30.75

O-Ring Material: EPDM

Expansion Joint 6" Travel (SxS)

Size	Part Number	Std. Pack	A	D	L	N
1/2	*9836-005X6	1	3.00	1.85	13.93	12.06
3/4	*9836-007X6	1	3.00	2.23	14.40	12.46
1	*9836-010X6	1	3.00	2.50	15.02	12.58
1 1/4	*9836-012X6	1	3.00	2.50	15.81	13.05
1 1/2	*9836-015X6	1	3.00	3.50	16.08	13.13
2	*9836-020X6	1	3.00	4.39	18.10	14.88
3	*9836-030X6	1	3.00	5.53	19.83	15.79
4	*9836-040X6	1	3.00	7.93	27.56	23.01
6	*9836-060X6	1	3.00	9.97	27.88	21.75

O-Ring Material: FPM

Expansion Joint 12" Travel (SxS)

Size	Part Number	Std. Pack	A	D	L	N
1/2	*9836-005X12	1	6.00	1.85	22.93	21.06
3/4	*9836-007X12	1	6.00	2.23	23.40	21.46
1	*9836-010X12	1	6.00	2.50	24.02	21.58
1 1/4	*9836-012X12	1	6.00	2.50	24.81	22.05
1 1/2	*9836-015X12	1	6.00	3.50	25.08	22.13
2	*9836-020X12	1	6.00	4.39	27.10	23.88
3	*9836-030X12	1	6.00	5.53	28.83	24.79
4	*9836-040X12	1	6.00	7.93	36.56	32.01
6	*9836-060X12	1	6.00	9.97	36.88	30.75

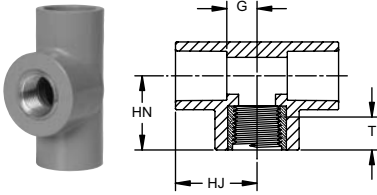
O-Ring Material: FPM

^ = 40% Restock Charge

* = Non-Cancelable / Non-Returnable

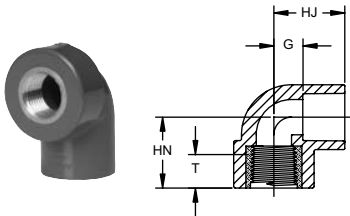
Schedule 80 CPVC Brass Insert Fittings

P/L 33 : CPVC Pressure Brass Insert Fittings



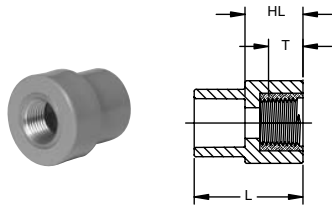
Tee (SxSxFPT Brass)

Size	Part Number	Std. Pack	HJ	HN	G	T
1/2	*8120200806	20	1.44	1.09	0.53	0.53
3/4 x 1/2	*8120200837	20	1.63	1.19	0.59	0.53



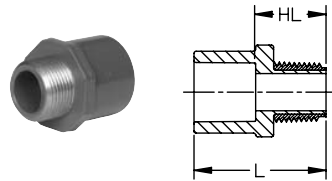
90° Ell (S x FPT Brass)

Size	Part Number	Std. Pack	HJ	HN	G	T
1/2	*8120100806	20	1.44	1.09	0.53	0.53
3/4 x 1/2	*8120100837	20	1.63	1.19	0.59	0.53



Coupling (SxFPT Brass)

Size	Part Number	Std. Pack	HL	L	T
1/2	*8121910806	20	0.93	1.66	0.53
3/4 x 1/2	*8121910837	20	0.86	1.78	0.53



Male Adapter (SxMPT Brass)

Size	Part Number	Std. Pack	HL	L
1/2	*8121900806	25	0.92	1.65
3/4	*8121900807	15	0.93	1.85
1	*8121900808	15	1.02	2.05

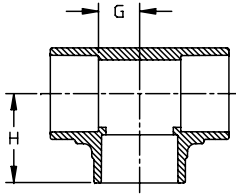
Schedule 80 CPVC

^ = 40% Restock Charge
 * = Non-Cancelable / Non-Returnable

Dimensions are subject to change. Please see online "Price Lists" at <http://www.gfpiping.com> for up-to-date information.

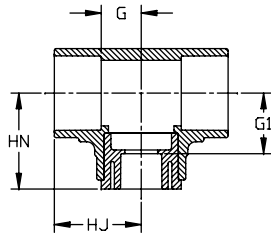
Schedule 80 CPVC Large Diameter Fittings

P/L 02 : CPVC Pressure LD Fittings - Molded



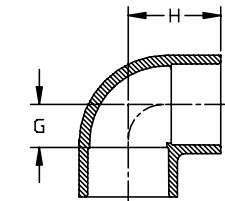
Tee (SxSxS)

Size	Part Number	Std. Pack	H	G
10	9801-100	1	11.25	5.75
12	9801-120	1	13.39	6.89



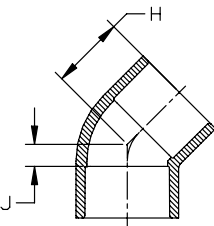
Reducing Tee (SxSxS)

Size	Part Number	Std. Pack	HJ	HN	G	G1
10 x 8	*9801-628FB	1	11.25	11.41	5.75	7.32
12 x 10	*9801-670FB	1	13.39	13.61	6.89	8.52



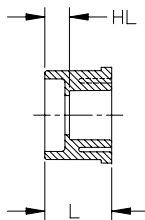
90° Ell (SxS)

Size	Part Number	Std. Pack	H	G
10	9806-100	1	11.25	5.75
12	9806-120	1	13.39	6.89



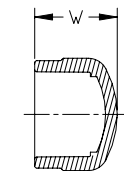
45° Ell (SxS)

Size	Part Number	Std. Pack	H	J
10	9817-100	1	8.11	2.61
12	9817-120	1	9.58	3.08



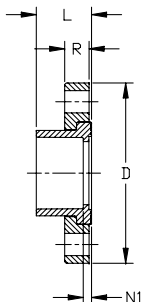
Flush Style Reducer Bushing (SpgxS)

Size	Part Number	Std. Pack	HL	L
10 x 8	9837-628	1	1.57	5.66
12 x 10	9837-670	1	1.63	6.72



Cap (S)

Size	Part Number	Std. Pack	W
10	9847-100	1	7.88
12	9847-120	1	9.38



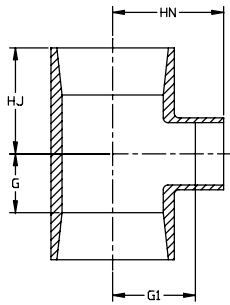
Van Stone Flange (S)

Size	Part Number	Std. Pack	# of Holes	Bolt Dia.	Bolt Circle Dia.	D	L	N1	R
10	9854-100	1	12	7/8	14.25	16.00	5.63	0.50	1.73
12	9854-120	1	12	7/8	17.00	19.00	6.69	0.56	1.73

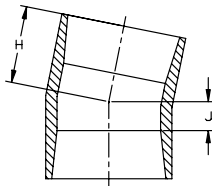
Schedule 80 CPVC Large Diameter Fittings

P/L 06 : CPVC Pressure LD Fittings - Fabricated

Reducing Tee (SxSxS)

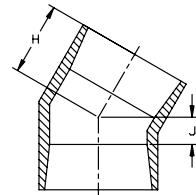


Size	Part Number	Std. Pack	HJ	HN	G	G1
10 x 2	*9801-619H	1	9.69	14.50	4.69	13.31
10 x 3	*9801-621H	1	10.25	15.00	5.25	13.25
10 x 4	*9801-623H	1	10.75	15.50	5.75	13.25
10 x 6	*9801-626H	1	11.81	16.50	6.81	13.19
12 x 2	*9801-659H	1	10.69	16.50	4.69	15.31
12 x 3	*9801-661H	1	11.25	17.00	5.25	15.25
12 x 4	*9801-663H	1	11.75	17.50	5.75	15.25
12 x 6	*9801-666H	1	12.81	18.50	6.81	15.19
12 x 8	*9801-668H	1	13.81	19.75	7.81	15.44



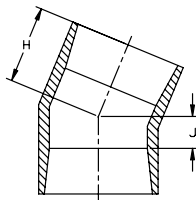
11 1/4° Ell (SxS)

Size	Part Number	Std. Pack	H	J
10	*9811-100H	1	10.81	5.81
12	*9811-120H	1	11.88	5.88



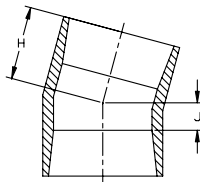
30° Ell (SxS)

Size	Part Number	Std. Pack	H	J
10	*9815-100H	1	12.25	7.25
12	*9815-120H	1	13.50	7.50



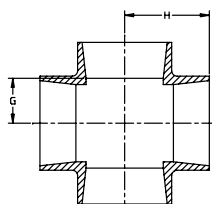
22 1/2° Ell (SxS)

Size	Part Number	Std. Pack	H	J
10	*9816-100H	1	11.63	6.63
12	*9816-120H	1	12.88	6.88



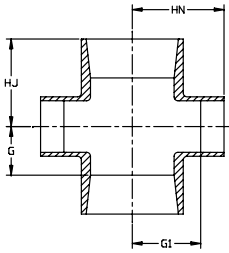
15° Ell (SxS)

Size	Part Number	Std. Pack	H	J
10	*9818-100H	1	11.38	6.38
12	*9818-120H	1	12.38	6.38



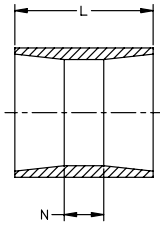
Cross (SxSxSxS)

Size	Part Number	Std. Pack	H	J
10	*9820-100H	1	19.25	8.88
12	*9820-120H	1	22.25	9.88



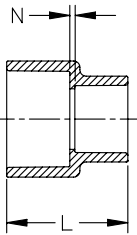
Reducing Cross (SxSxS)

Size	Part Number	Std. Pack	HJ	HN	G	G1
10 x 2	*9820-619H	1	9.69	14.50	4.69	13.31
10 x 3	*9820-621H	1	10.25	15.00	5.25	13.25
10 x 4	*9820-623H	1	10.75	15.50	5.75	13.25
10 x 6	*9820-626H	1	11.81	16.50	6.81	13.19
10 x 8	*9820-628H	1	12.81	17.75	7.81	13.44
12 x 2	*9820-659H	1	10.69	16.50	4.69	15.31
12 x 3	*9820-661H	1	11.25	17.00	5.25	15.25
12 x 4	*9820-663H	1	11.75	17.50	5.75	15.25
12 x 6	*9820-666H	1	12.81	18.50	6.81	15.19
12 x 8	*9820-668H	1	13.81	19.75	7.81	15.44
12 x 10	*9820-670H	1	14.88	21.25	8.88	15.88



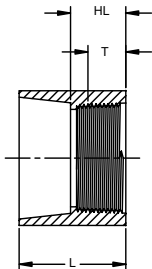
Coupling (SxS)

Size	Part Number	Std. Pack	L	N
10	*9829-100H	1	13.00	3.00
12	*9829-120H	1	15.00	3.00



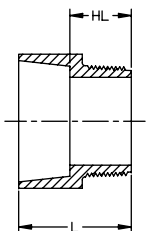
Reducing Coupling (SxS)

Size	Part Number	Std. Pack	L	N
10 x 4	*9829-623H	1	16.25	9.25
10 x 6	*9829-626H	1	15.75	7.75
10 x 8	*9829-628H	1	14.00	5.00
12 x 8	*9829-668H	1	17.00	7.00
12 x 10	*9829-670H	1	17.00	6.00



Female Adapter (SxFPT)

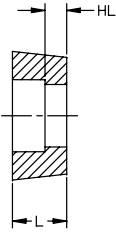
Size	Part Number	Std. Pack	HL	L	T
6	*9835-060H	1	4.50	7.50	1.51
8	*9835-080H	1	4.25	8.50	1.71
10	*9835-100H	1	5.00	10.00	1.93
12	*9835-120H	1	5.00	11.00	2.13



Male Adapter (SxMPT)

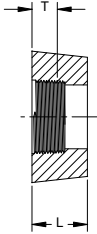
Size	Part Number	Std. Pack	HL	L
6	*9836-060H	1	3.50	7.00
8	*9836-080H	1	4.00	8.00
10	*9836-100H	1	4.50	9.50
12	*9836-120H	1	5.50	11.50

Dimensions are subject to change. Please see online "Price Lists" at <http://www.gfpiping.com> for up-to-date information.



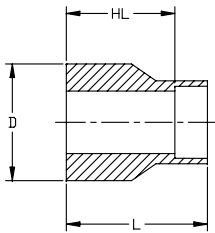
Flush Style Reducer Bushing (SpgxS)

Size	Part Number	Std. Pack	HL	L
10 x 4	*9837-623H	1	3.00	5.00
10 x 6	*9837-626H	1	2.00	5.00
12 x 6	*9837-666H	1	3.00	5.00
12 x 8	*9837-668H	1	2.00	6.00



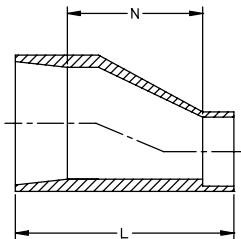
Flush Style Reducer Bushing (SpgxFPT)

Size	Part Number	Std. Pack	L	T
10 x 6	*9838-626H	1	5.00	1.51
10 x 8	*9838-628H	1	5.00	1.71
12 x 8	*9838-668H	1	6.00	1.71
12 x 10	*9838-670H	1	6.00	1.93



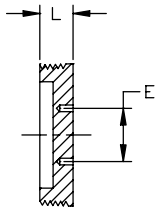
Extended Style Reducer Bushing (SpgxS)

Size	Part Number	Std. Pack	D	HL	L
10 x 6	*9840-626H	1	10.75	9.00	12.00
10 x 8	*9840-628H	1	10.75	6.50	10.50
12 x 8	*9840-668H	1	12.75	10.00	15.00
12 x 10	*9840-670H	1	12.75	7.25	12.25



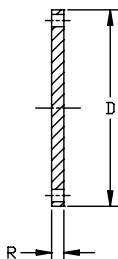
Eccentric Reducer (SxS)

Size	Part Number	Std. Pack	L	N
10 x 4	*9841-623H	1	24.25	17.00
10 x 6	*9841-626H	1	17.75	3.75
10 x 8	*9841-628H	1	18.00	10.00
12 x 6	*9841-666H	1	24.00	9.25
12 x 8	*9841-668H	1	24.25	8.00
12 x 10	*9841-670H	1	21.00	3.25



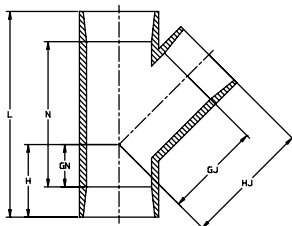
Plug (MPT)

Size	Part Number	Std. Pack	E	L
6	*9850-060H	1	4.00	1.00
8	*9850-080H	1	4.00	1.00
10	*9850-100H	1	4.00	1.00
12	*9850-120H	1	4.00	1.00



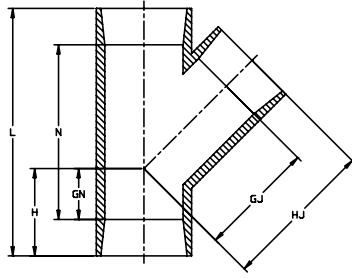
Flange (Blind)

Size	Part Number	Std. Pack	# of Holes	Bolt Dia.	Bolt Corcle Dia.	D	R
10	*9853-100H	1	12	7/8	14.25	16.00	1.00
12	*9853-120H	1	12	7/8	17.00	19.00	1.00



45° Wye (SxSxS)

Size	Part Number	Std. Pack	GJ	GN	H	HJ	L	N
10	*9875-100H	1	16.98	5.73	10.73	21.98	33.21	23.21
12	*9875-120H	1	19.39	6.14	12.14	25.39	38.03	26.03



Reducing 45° Wye (SxSxS)

Size	Part Number	Std. Pack	GJ	GN	H	HJ	L	N
10 x 2	*875-619H	1	12.04	-0.20	4.80	13.04	21.36	11.36
10 x 3	*875-621H	1	12.80	0.60	5.60	14.10	22.95	12.95
10 x 4	*875-623H	1	13.10	1.31	6.31	15.10	24.36	14.36
10 x 6	*875-626H	1	14.16	2.81	7.81	17.16	27.37	17.37
10 x 8	*875-628H	1	15.41	4.22	9.22	19.41	30.2	20.2
12 x 2	*875-659H	1	13.45	-1.20	4.80	14.45	23.36	11.36
12 x 3	*875-661H	1	14.01	-0.40	5.60	15.51	24.95	12.95
12 x 4	*875-663H	1	14.51	0.31	6.31	16.51	26.36	14.36
12 x 6	*875-666H	1	15.58	1.81	7.81	18.58	29.37	17.37
12 x 8	*875-668H	1	16.83	3.22	9.22	20.83	32.2	20.2
12 x 10	*875-670H	1	18.39	4.73	10.73	23.39	35.21	23.21

^ = 40% Restock Charge

* = Non-Cancelable / Non-Returnable

Dimensions are subject to change. Please see online "Price Lists" at <http://www.gfpiping.com> for up-to-date information.

George Fischer Piping Systems

CPVC Pressure Piping System Specification Submittal Data Sheet Schedule 80 Pipe and Fittings

Pipe:

Pipe will be manufactured to the dimensions and tolerances of ASTM F441. The CPVC material shall be Type I, Grade IV with a cell classification of 23447-B and conform to ASTM D1784. The pipe will conform to NSF 14 & 61, CSA B137.6 (up to 4”), and UPC® standards

- CPVC Sch.80 Type I, Group I Plain End Pipe - 20 ft. Lengths

Fittings

Socket type molded fittings will be manufactured to the dimensions and tolerances of ASTM F439. Threaded type (NPT) molded fittings will be manufactured to the dimensions and tolerances of ASTM F437 and meet the requirements of ANSI/ASME B 1.20.1. Flanges shall meet the O.D. and bolt hole patterns as specified in ANSI/ASME B 16.5. The CPVC material shall be Type I, Grade IV with a cell classification of 23447-B and conform to ASTM D1784. The fittings will conform to NSF 14 & 61, and UPC® standards.

- CPVC Sch.80 Type I, Grade I Socket Type
- CPVC Sch.80 Type I, Grade I Threaded Type
- CPVC Sch.80 Type I, Grade I Flange Type

Job Name: _____

Job Location: _____

Engineer: _____

Contractor: _____

Representative: _____



GEORG FISCHER
PIPING SYSTEMS