

Product Range

Butterfly Valve Type 567



# List of Abbreviations

ANSI	American National Standard Institute
ASTM	American Society for Testing and Materials
BS	British Standard
DIN	Deutsche Industrie-Normen
ISO	International Standardization Organization
ABS	Acrylnitrile-Butadiene-Styrene
PVC-U	Polyvinyl chloride, unplasticized
PVC-C	Polyvinyl chloride, post-chlorinated
PP-H	Polypropylene, Homopolymeride
PE	Polyethylene
PVDF	Polyvinylidene fluoride
EPDM	Ethylene-Propylene-Rubber
FPM	Fluororubber, e.g. Viton®
PTFE	Polytetrafluoroethylene, e.g. Teflon®
d	Pipe outer diameter
DN	Nominal diameter
PN	Nominal pressure at 20 °C, water
kg	Weight in kilograms
®	Registered trademark

The technical data are not binding and not expressly warranted characteristics of the goods. They are subject to change. Our General Conditions of Sale apply.

Dimensions

All dimensions are given in mm.

# Table of Contents

## The new Butterfly Valve Type 567

---

### Butterfly Valve Type 567 PVC-U

- bare shaft	5
- with hand lever/with reduction gear	6
- with hand lever, silicone free version	8
- with electric actuator type 140	9
- with pneumatic actuator type 240	13

---

### Butterfly Valve Type 567 PVC-C

- bare shaft	16
- with hand lever/with reduction gear	17
- with electric actuator type 140	19
- with pneumatic actuator type 240	23

---

### Butterfly Valve Type 567 ABS

- bare shaft	26
- with hand lever/with reduction gear	27
- with electric actuator type 140	29
- with pneumatic actuator type 240	33

---

### Butterfly Valve Type 567 PP-H

- bare shaft	36
- with hand lever/with reduction gear	37
- with hand lever, silicone free version	39
- with electric actuator type 140	40
- with pneumatic actuator type 240	44

---

### Butterfly Valve Type 567 SYGEF Standard

- bare shaft	47
- with hand lever/with reduction gear	48
- with electric actuator type 140	50
- with pneumatic actuator type 240	54

---

Assembly parts	57
----------------	----

---

Flange adaptor	62
----------------	----

---

Position indicator	72
--------------------	----

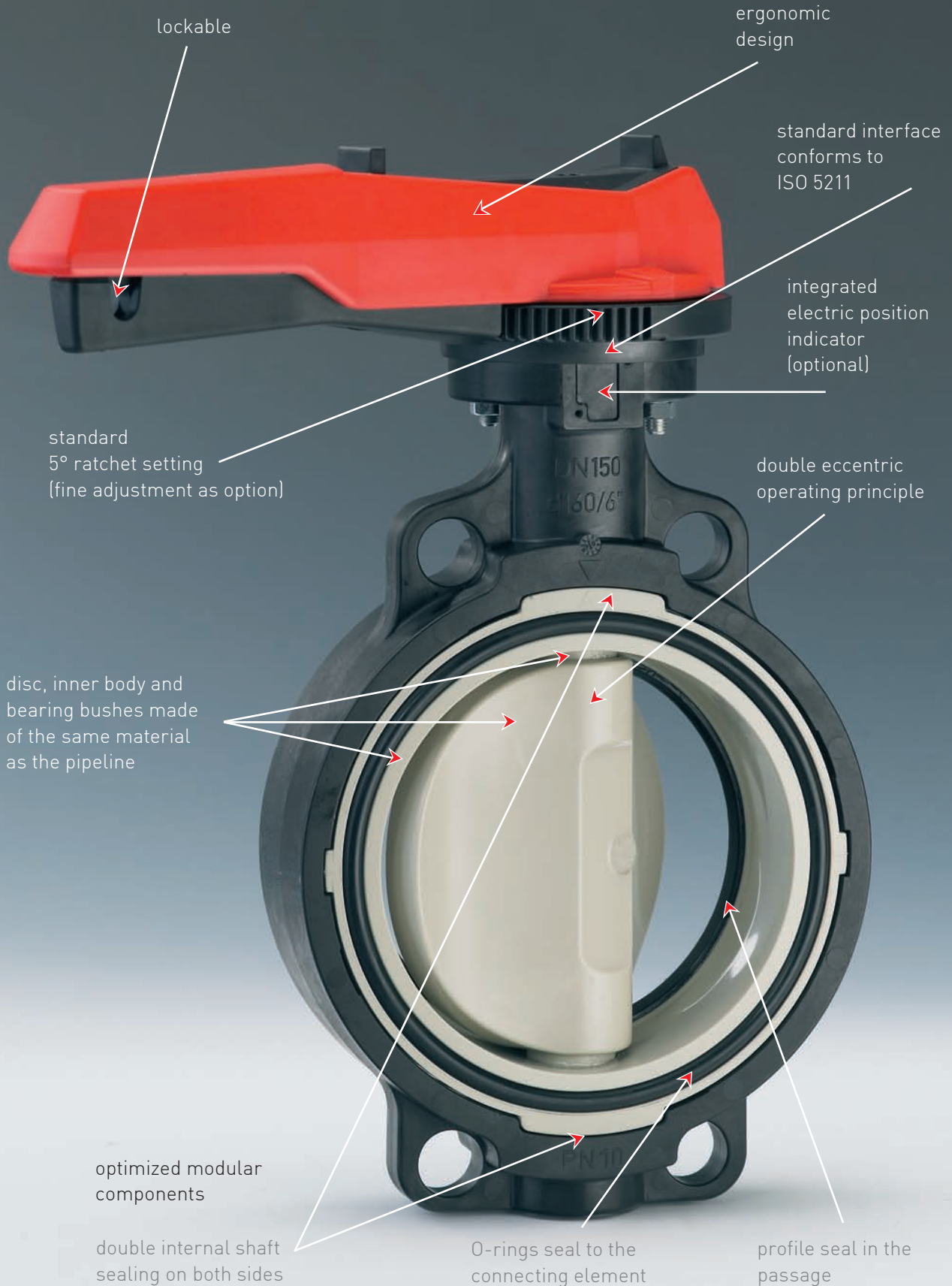
---

Spare parts	74
-------------	----

---



# ➤ A winner in every detail



# One system - many options

Georg Fischer presents the new 567/568 type series of butterfly valves with a comprehensive range of products and a multitude of interesting combination possibilities.

We can offer you, for example, manual valves with hand lever or reduction gear. The program also includes pneumatically or electrically actuated valves from DN50 to DN300.

Our system's modular design principle allows you to exchange individual system components – fast, easily and at very little expense. You also have a choice of materials: PVC-U, PVC-C, ABS, or b-PP-H and PVDF.

Our standard sealing materials are EPDM and FPM, but other materials are available on request.

All the customary installation pipe standards are supplied:

- metric: DIN, EN, ISO
- inch: BS, ASTM
- JIS (only wafer-type valves)

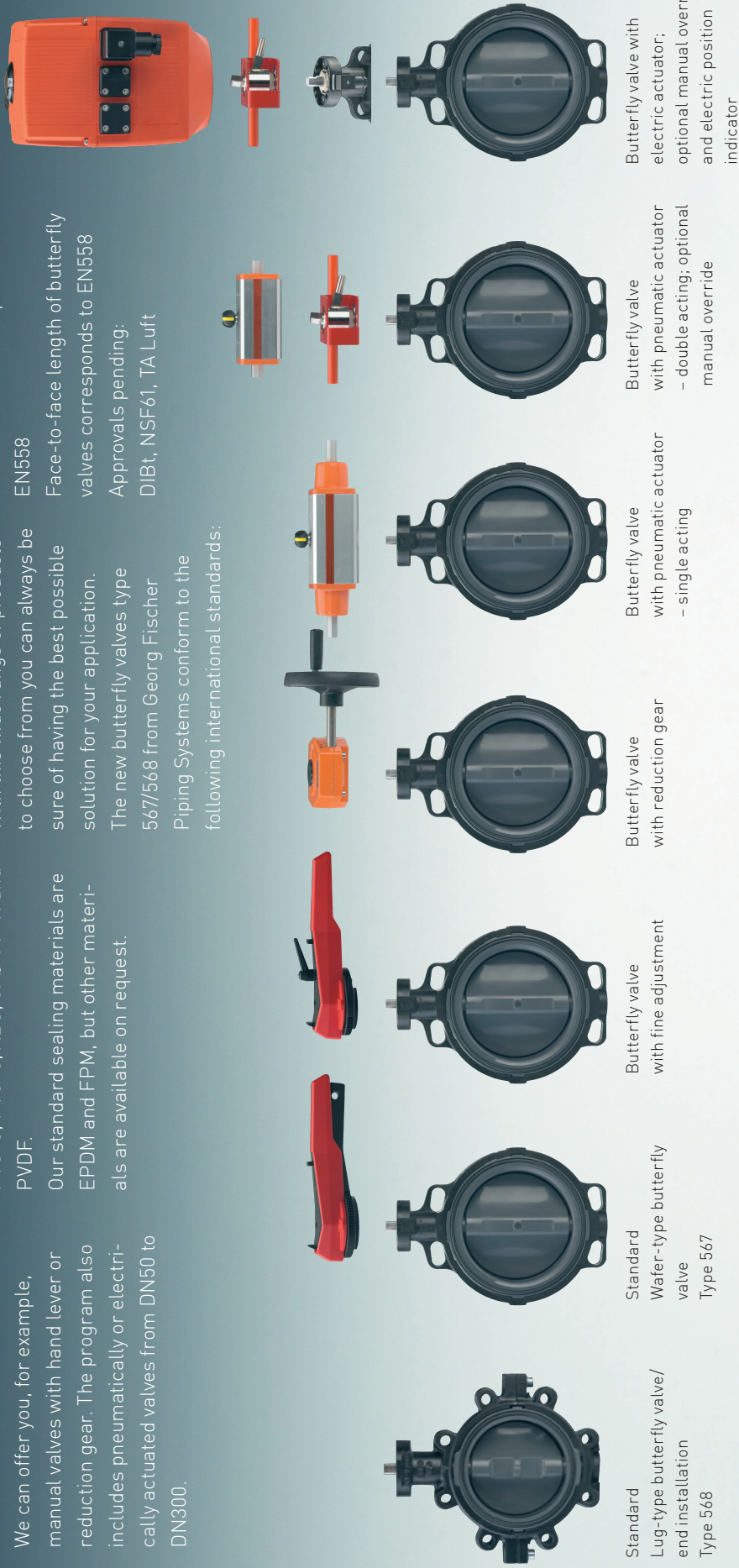
With this wide range of products to choose from you can always be sure of having the best possible solution for your application.

The new butterfly valves type 567/568 from Georg Fischer Piping Systems conform to the following international standards:

prEN ISO 16136  
Industrial valves – butterfly valves in thermoplastic materials ISO9393

Thermoplastic valves – pressure test methods and requirements EN558

Face-to-face length of butterfly valves corresponds to EN558  
Approvals pending:  
DIBt, NSF61, TA Luft



Standard Lug-type butterfly valve/end installation Type 568

Standard Wafer-type butterfly valve Type 567

Butterfly valve with fine adjustment

Butterfly valve with reduction gear

Butterfly valve with pneumatic actuator – single acting

Butterfly valve with pneumatic actuator – double acting; optional manual override

Butterfly valve with electric actuator; optional manual override and electric position indicator



# ➤ Strong features for strong arguments

Now in the material  
PVDF available  
Higher nominal pressure  
by improved design

standard interface  
per ISO 5211

disc, inner body and  
bearing bushes made  
of the same material as  
the pipeline.  
Your benefit: better re-  
sistance to corrosion

robust outer body of PP-GF  
30; connecting dimensions  
according to  
ISO, BS, ANSI, JIS

optimized modular  
components:

profile seal in the  
passage

special seal to the  
connecting element

double eccentric  
operating principle

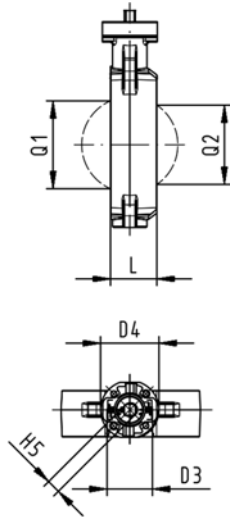
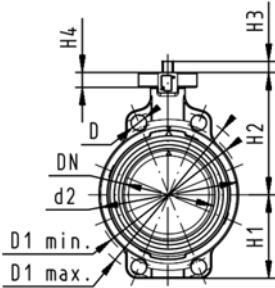
# Butterfly valves PVC-U

## Butterfly valve type 567 PVC-U Bare shaft



### Model:

- Connecting dimension: ISO 7005 PN 10, EN 1092 PN 10, DIN 2501 PN 10, ANSI/ASME B 16.5 Class 150, BS 1560: 1989, BS 4504, JIS B 2220
- Overall length according to EN 558-1, ISO 5752
- Interface F07 for the dimensions DN50-200 according to DIN/ISO 5211
- Interface F10 for the dimensions DN250-300 according to DIN/ISO 5211



d [mm]	DN [mm]	Inch	PN	kv-value ( $\Delta p=1$ bar) [l/min]	EPDM Code	FPM Code
63	50	2	10	1470	<b>161 567 802</b>	<b>161 567 822</b>
75	65	2 ½	10	2200	<b>161 567 803</b>	<b>161 567 823</b>
90	80	3	10	3000	<b>161 567 804</b>	<b>161 567 824</b>
110	100	4	10	6500	<b>161 567 805</b>	<b>161 567 825</b>
140	125	5	10	11500	<b>161 567 806</b>	<b>161 567 826</b>
160	150	6	10	16600	<b>161 567 807</b>	<b>161 567 827</b>
225	200	8	10	39600	<b>161 567 808</b>	<b>161 567 828</b>
280	250	10	10	55200	<b>161 567 809</b>	<b>161 567 829</b>
315	300	12	10	80000	<b>161 567 810</b>	<b>161 567 830</b>

d [mm]	D [mm]	D1 min. [mm]	D1 max. [mm]	d2 [mm]	D3 [mm]	D4 [mm]	H [mm]	H1 [mm]	H2 [mm]	H3 [mm]	H4 [mm]	H5 [mm]	L [mm]	Q1 [mm]
63	19	120.0	125.0	104	70	90	222	77	134	27	23	11	45	40
75	19	139.7	145.0	115	70	90	235	83	140	27	23	11	46	54
90	19	150.0	160.0	131	70	90	247	89	146	27	23	11	49	67
110	19	175.0	190.5	161	70	90	287	104	167	16	23	14	56	88
140	23	210.0	215.9	187	70	90	313	117	181	16	23	14	64	113
160	24	241.3	241.3	215	70	90	335	130	189	19	23	17	72	139
225	23	290.0	295.0	267	70	90	387	158	210	19	23	17	73	178
280	25	353.0	362.0	329	102	125	509	205	264	40	23	22	113	210
315	25	400.0	432.0	379	102	125	553	228	285	40	23	22	113	256

d [mm]	Q2 [mm]
63	
75	35
90	50
110	74
140	97
160	123
225	169
280	207
315	253

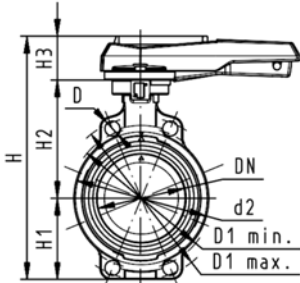


## Butterfly valve type 567 PVC-U Hand lever with ratchet settings

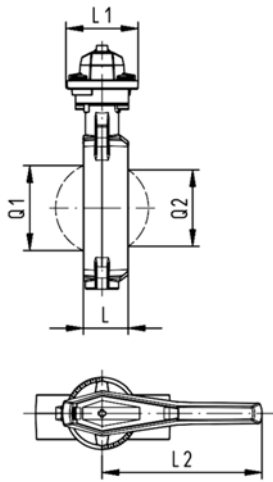


### Model:

- Connecting dimension: ISO 7005 PN 10, EN 1092 PN 10, DIN 2501 PN 10, ANSI/ASME B 16.5 Class 150, BS 1560: 1989, BS 4504, JIS B 2220
- Overall length according to EN 558-1, ISO 5752
- We recommend for the dimensions DN250 and DN300 only 6 bar maximum system pressure for the hand lever version

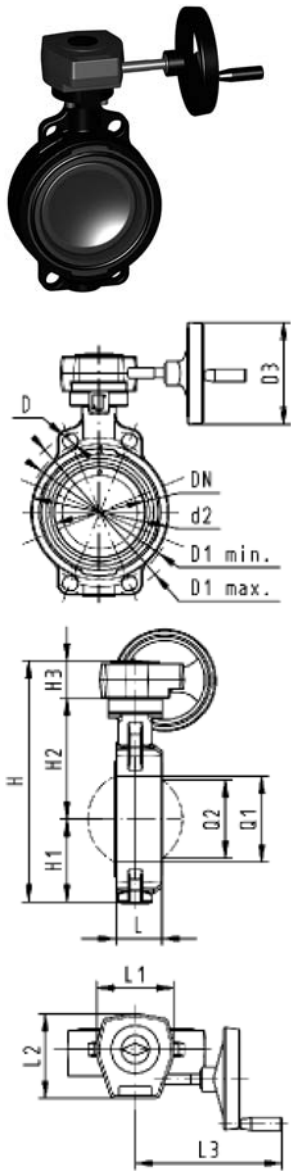


d [mm]	DN [mm]	Inch	PN	kv-value ( $\Delta p=1$ bar) [l/min]	EPDM Code	FPM Code
63	50	2	10	1470	<b>161 567 002</b>	<b>161 567 022</b>
75	65	2 ½	10	2200	<b>161 567 003</b>	<b>161 567 023</b>
90	80	3	10	3000	<b>161 567 004</b>	<b>161 567 024</b>
110	100	4	10	6500	<b>161 567 005</b>	<b>161 567 025</b>
140	125	5	10	11500	<b>161 567 006</b>	<b>161 567 026</b>
160	150	6	10	16600	<b>161 567 007</b>	<b>161 567 027</b>
225	200	8	10	39600	<b>161 567 008</b>	<b>161 567 028</b>
280	250	10	10	55200	<b>161 567 009</b>	<b>161 567 029</b>
315	300	12	10	80000	<b>161 567 010</b>	<b>161 567 030</b>



d [mm]	D [mm]	D1 min. [mm]	D1 max. [mm]	d2 [mm]	H [mm]	H1 [mm]	H2 [mm]	H3 [mm]	L [mm]	L1 [mm]	L2 [mm]	Q1 [mm]	Q2 [mm]
63	19	120.0	125.0	104	264	77	134	54	45	106	205	40	
75	19	139.7	145.0	115	277	83	140	54	46	106	205	54	35
90	19	150.0	160.0	131	289	89	146	54	49	106	205	67	50
110	19	175.0	190.5	161	325	104	167	55	56	106	255	88	74
140	23	210.0	215.9	187	352	117	181	55	64	106	255	113	97
160	24	241.3	241.3	215	373	130	189	55	72	106	255	139	123
225	23	290.0	295.0	267	435	158	210	67	73	140	408	178	169
280	25	353.0	362.0	329	554	205	264	85	113	149	408	210	207
315	25	400.0	432.0	379	598	228	285	85	113	149	408	256	253





## Butterfly valve type 567 PVC-U Reduction gear with handwheel



### Model:

- Connecting dimension: ISO 7005 PN 10, EN 1092 PN 10, DIN 2501 PN 10, ANSI/ASME B 16.5 Class 150, BS 1560: 1989, BS 4504, JIS B 2220
- Overall length according to EN 558-1, ISO 5752

d [mm]	DN [mm]	Inch	PN	kv-value ( $\Delta p=1$ bar) [l/min]	EPDM Code	FPM Code
63	50	2	10	1470	<b>161 567 042</b>	<b>161 567 062</b>
75	65	2 ½	10	2200	<b>161 567 043</b>	<b>161 567 063</b>
90	80	3	10	3000	<b>161 567 044</b>	<b>161 567 064</b>
110	100	4	10	6500	<b>161 567 045</b>	<b>161 567 065</b>
140	125	5	10	11500	<b>161 567 046</b>	<b>161 567 066</b>
160	150	6	10	16600	<b>161 567 047</b>	<b>161 567 067</b>
225	200	8	10	39600	<b>161 567 048</b>	<b>161 567 068</b>
280	250	10	10	55200	<b>161 567 049</b>	<b>161 567 069</b>
315	300	12	10	80000	<b>161 567 050</b>	<b>161 567 070</b>

d [mm]	D [mm]	D1 min. [mm]	D1 max. [mm]	d2 [mm]	D3 [mm]	H [mm]	H1 [mm]	H2 [mm]	H3 [mm]	L [mm]	L1 [mm]	L2 [mm]	L3 [mm]	Q1 [mm]
63	19	120.0	125.0	104	160	278	77	134	60	45	120	132	236	40
75	19	139.7	145.0	115	160	291	83	140	60	46	120	132	236	54
90	19	150.0	160.0	131	160	303	89	146	60	49	120	132	236	67
110	19	175.0	190.5	160	160	339	104	167	60	56	120	132	236	88
140	23	210.0	215.9	187	160	365	117	181	60	64	120	132	236	113
160	24	241.3	241.3	215	160	387	130	189	60	72	120	132	236	139
225	23	290.0	295.0	267	160	436	158	210	60	73	120	132	236	178
280	25	353.0	362.0	329	160	529	205	264	60	113	134	151	261	210
315	25	400.0	432.0	379	160	573	228	285	60	113	134	151	261	256

d [mm]	Q2 [mm]
63	
75	35
90	50
110	74
140	97
160	123
225	169
280	207
315	253

# Butterfly valves PVC-U SF

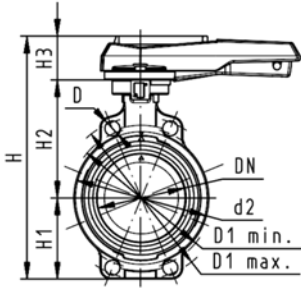
## Butterfly valve type 567 PVC-U SF Hand lever with ratchet settings



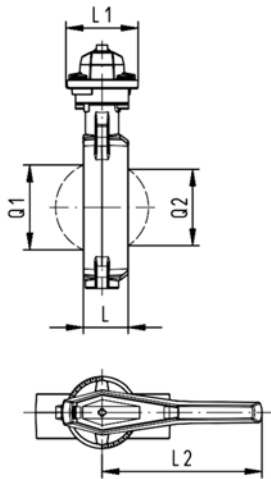
### Model:

- Silicon-free / paint-compatible
- Connecting dimension: ISO 7005 PN 10, EN 1092 PN 10, DIN 2501 PN 10, ANSI/ASME B 16.5 Class 150, BS 1560: 1989, BS 4504, JIS B 2220
- Overall length according to EN 558-1, ISO 5752

Available from second quarter 2006



d [mm]	DN [mm]	Inch	PN	kv-value ( $\Delta p=1$ bar) [l/min]	EPDM Code	FPM Code
63	50	2	10	1470	<b>161 567 402</b>	<b>161 567 422</b>
75	65	2 ½	10	2200	<b>161 567 403</b>	<b>161 567 423</b>
90	80	3	10	3000	<b>161 567 404</b>	<b>161 567 424</b>
110	100	4	10	6500	<b>161 567 405</b>	<b>161 567 425</b>
140	125	5	10	11500	<b>161 567 406</b>	<b>161 567 426</b>
160	150	6	10	16600	<b>161 567 407</b>	<b>161 567 427</b>
225	200	8	10	39600	<b>161 567 408</b>	<b>161 567 428</b>



d [mm]	D [mm]	D1 min. [mm]	D1 max. [mm]	d2 [mm]	H [mm]	H1 [mm]	H2 [mm]	H3 [mm]	L [mm]	L1 [mm]	L2 [mm]	Q1 [mm]	Q2 [mm]
63	19	120.0	125.0	104	264	77	134	54	45	106	205	40	
75	19	139.7	145.0	115	277	83	140	54	46	106	205	54	35
90	19	150.0	160.0	131	289	89	146	54	49	106	205	67	50
110	19	175.0	190.5	161	325	104	167	55	56	106	255	88	74
140	23	210.0	215.9	187	352	117	181	55	64	106	255	113	97
160	24	241.3	241.3	215	373	130	189	55	72	106	255	139	123
225	23	290.0	295.0	267	435	158	210	67	73	140	408	178	169

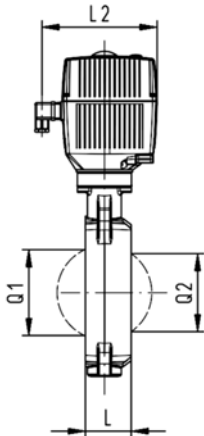
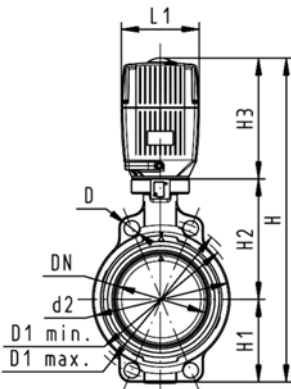
# Butterfly valves electric PVC-U

## Butterfly valve type 140 PVC-U 100-230V Without manual override



### Model:

- Connecting dimension: ISO 7005 PN 10, EN 1092 PN 10, DIN 2501 PN 10, ANSI/ASME B 16.5 Class 150, BS 1560: 1989, BS 4504, JIS B 2220
- Overall length according to EN 558-1, ISO 5752
- Voltage 100-230 V, 50-60 Hz
- Control time 15 s/90°<) EA31
- Control time 25s/90°<) EA42
- Control range 90°<)
- Actuator with integrated emergency manual override standard



d [mm]	DN [mm]	Inch	PN	kv-value ( $\Delta p=1$ bar) [l/min]	EPDM Code	FPM Code
63	50	2	10	1470	199 140 042	199 140 062
75	65	2 ½	10	2200	199 140 043	199 140 063
90	80	3	10	3000	199 140 044	199 140 064
110	100	4	10	6500	199 140 045	199 140 065
140	125	5	10	11500	199 140 046	199 140 066
160	150	6	10	16600	199 140 047	199 140 067
225	200	8	10	39600	199 140 048	199 140 068
280	250	10	6	55200	199 140 049	199 140 069

d [mm]	Actuator unit type	D [mm]	D1 min. [mm]	D1 max. [mm]	d2 [mm]	H [mm]	H1 [mm]	H2 [mm]	H3 [mm]	L [mm]	L1 [mm]	L2 [mm]	Q1 [mm]
63	EA-31	19	120.0	125.0	104	400	77	134	188	45	122	180	40
75	EA-31	19	139.7	145.0	115	413	83	140	188	46	122	180	54
90	EA-31	19	150.0	160.0	131	428	89	146	188	49	122	180	67
110	EA-31	19	175.0	190.5	161	460	104	167	188	56	122	180	88
140	EA-31	23	210.0	215.9	187	487	117	181	188	64	122	180	113
160	EA-31	24	241.3	241.3	215	508	130	189	188	72	122	180	139
225	EA-42	23	290.0	295.0	267	575	158	210	208	73	122	180	178
280	EA-42	25	353.0	362.0	329	677	205	264	208	113	122	180	256

d [mm]	Q2 [mm]
63	
75	35
90	50
110	74
140	97
160	123
225	169
280	207





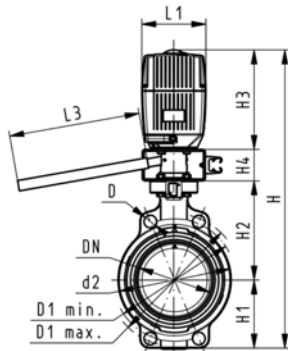
## Butterfly valve type 140 PVC-U 100-230V With manual override



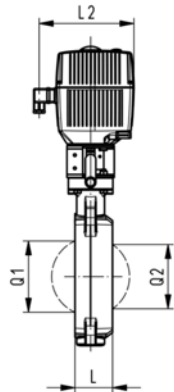
### Model:

- Connecting dimension: ISO 7005 PN 10, EN 1092 PN 10, DIN 2501 PN 10, ANSI/ASME B 16.5 Class 150, BS 1560: 1989, BS 4504, JIS B 2220
- Overall length according to EN 558-1, ISO 5752
- Voltage 100-230 V, 50-60 Hz
- Control time 15 s/90°<) EA31
- Control time 25s/90°<) EA42
- Control range 90°<)
- Actuator with integrated emergency manual override standard

d [mm]	DN [mm]	Inch	PN	kv-value ( $\Delta p=1$ bar) [l/min]	EPDM Code	FPM Code
63	50	2	10	1470	<b>199 140 002</b>	<b>199 140 022</b>
75	65	2 ½	10	2200	<b>199 140 003</b>	<b>199 140 023</b>
90	80	3	10	3000	<b>199 140 004</b>	<b>199 140 024</b>
110	100	4	10	6500	<b>199 140 005</b>	<b>199 140 025</b>
140	125	5	10	11500	<b>199 140 006</b>	<b>199 140 026</b>
160	150	6	10	16600	<b>199 140 007</b>	<b>199 140 027</b>
225	200	8	10	39600	<b>199 140 008</b>	<b>199 140 028</b>



d [mm]	Actuator unit type	D [mm]	D1 min. [mm]	D1 max. [mm]	d2 [mm]	H [mm]	H1 [mm]	H2 [mm]	H3 [mm]	H4 [mm]	L [mm]	L1 [mm]	L2 [mm]
63	EA-31	19	120.0	125.0	104	460	77	134	188	60	45	122	180
75	EA-31	19	139.7	145.0	115	473	83	140	188	60	46	122	180
90	EA-31	19	150.0	160.0	131	488	89	146	188	60	49	122	180
110	EA-31	19	175.0	190.5	161	520	104	167	188	60	56	122	180
140	EA-31	23	210.0	215.9	187	547	117	181	188	60	64	122	180
160	EA-31	24	241.3	241.3	215	568	130	189	188	60	72	122	180
225	EA-42	23	290.0	295.0	267	635	158	210	208	60	73	122	180



d [mm]	L3 [mm]	Q1 [mm]	Q2 [mm]
63	250	40	
75	250	54	35
90	250	67	50
110	250	88	74
140	250	113	97
160	250	139	123
225	250	178	169

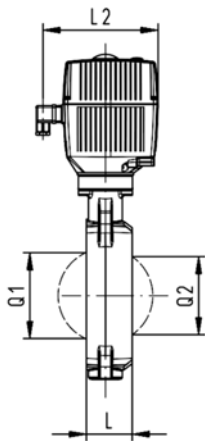
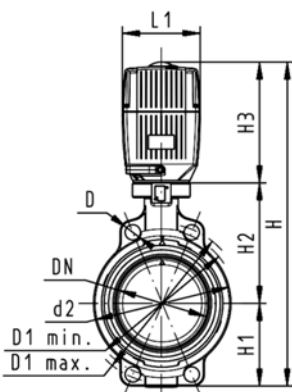


## Butterfly valve type 140 PVC-U 24V Without manual override



### Model:

- Connecting dimension: ISO 7005 PN 10, EN 1092 PN 10, DIN 2501 PN 10, ANSI/ASME B 16.5 Class 150, BS 1560: 1989, BS 4504, JIS B 2220
- Overall length according to EN 558-1, ISO 5752
- Voltage 24 V AC/DC
- Control time 15 s/90°<) EA31
- Control time 25s/90°<) EA42
- Control range 90°<)
- Actuator with integrated emergency manual override standard
- The dimension DN300 on request



d [mm]	DN [mm]	Inch	PN	kv-value ( $\Delta p=1$ bar) [l/min]	EPDM Code	FPM Code
63	50	2	10	1470	<b>199 140 122</b>	<b>199 140 142</b>
75	65	2 ½	10	2200	<b>199 140 123</b>	<b>199 140 143</b>
90	80	3	10	3000	<b>199 140 124</b>	<b>199 140 144</b>
110	100	4	10	6500	<b>199 140 125</b>	<b>199 140 145</b>
140	125	5	10	11500	<b>199 140 126</b>	<b>199 140 146</b>
160	150	6	10	16600	<b>199 140 127</b>	<b>199 140 147</b>
225	200	8	10	39600	<b>199 140 128</b>	<b>199 140 148</b>
280	250	10	6	55200	<b>199 140 129</b>	<b>199 140 149</b>

d [mm]	Actuator unit type	D [mm]	D1 min. [mm]	D1 max. [mm]	d2 [mm]	H [mm]	H1 [mm]	H2 [mm]	H3 [mm]	L [mm]	L1 [mm]	L2 [mm]	Q1 [mm]
63	EA-31	19	120.0	125.0	104	400	77	134	188	45	122	180	40
75	EA-31	19	139.7	145.0	115	413	83	140	188	46	122	180	54
90	EA-31	19	150.0	160.0	131	428	89	146	188	49	122	180	67
110	EA-31	19	175.0	190.5	161	460	104	167	188	56	122	180	88
140	EA-31	23	210.0	215.9	187	487	117	181	188	64	122	180	113
160	EA-31	24	241.3	241.3	215	508	130	189	188	72	122	180	139
225	EA-42	23	290.0	295.0	267	575	158	210	208	73	122	180	178
280	EA-42	25	353.0	362.0	329	677	205	264	208	113	122	180	256

d [mm]	Q2 [mm]
63	
75	35
90	50
110	74
140	97
160	123
225	169
280	207



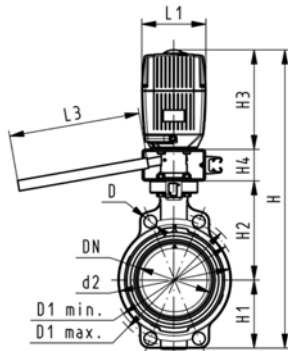
## Butterfly valve type 140 PVC-U 24V With manual override



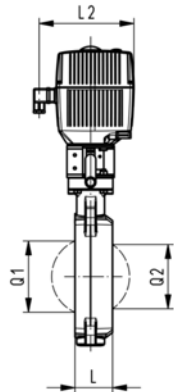
### Model:

- Connecting dimension: ISO 7005 PN 10, EN 1092 PN 10, DIN 2501 PN 10, ANSI/ASME B 16.5 Class 150, BS 1560: 1989, BS 4504, JIS B 2220
- Overall length according to EN 558-1, ISO 5752
- Voltage 24 V AC/DC
- Control time 15 s/90°<) EA31
- Control time 25s/90°<) EA42
- Control range 90°<)
- Actuator with integrated emergency manual override standard

d [mm]	DN [mm]	Inch	PN	kv-value ( $\Delta p=1$ bar) [l/min]	EPDM Code	FPM Code
63	50	2	10	1470	<b>199 140 082</b>	<b>199 140 102</b>
75	65	2 ½	10	2200	<b>199 140 083</b>	<b>199 140 103</b>
90	80	3	10	3000	<b>199 140 084</b>	<b>199 140 104</b>
110	100	4	10	6500	<b>199 140 085</b>	<b>199 140 105</b>
140	125	5	10	11500	<b>199 140 086</b>	<b>199 140 106</b>
160	150	6	10	16600	<b>199 140 087</b>	<b>199 140 107</b>
225	200	8	10	39600	<b>199 140 088</b>	<b>199 140 108</b>



d [mm]	Actuator unit type	D [mm]	D1 min. [mm]	D1 max. [mm]	d2 [mm]	H [mm]	H1 [mm]	H2 [mm]	H3 [mm]	H4 [mm]	L [mm]	L1 [mm]	L2 [mm]
63	EA-31	19	120.0	125.0	104	460	77	134	188	60	45	122	180
75	EA-31	19	139.7	145.0	115	473	83	140	188	60	46	122	180
90	EA-31	19	150.0	160.0	131	488	89	146	188	60	49	122	180
110	EA-31	19	175.0	190.5	161	520	104	167	188	60	56	122	180
140	EA-31	23	210.0	215.9	187	547	117	181	188	60	64	122	180
160	EA-31	24	241.3	241.3	215	568	130	189	188	60	72	122	180
225	EA-42	23	290.0	295.0	267	635	158	210	208	60	73	122	180

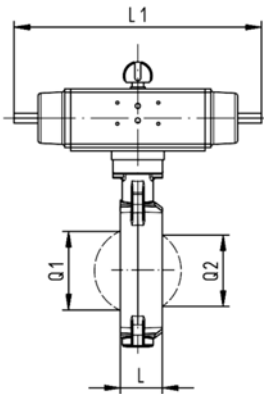
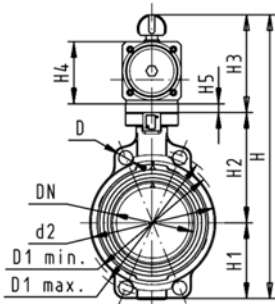


d [mm]	L3 [mm]	Q1 [mm]	Q2 [mm]
63	250	40	
75	250	54	35
90	250	67	50
110	250	88	74
140	250	113	97
160	250	139	123
225	250	178	169



# Butterfly valves pneumatic PVC-U

## Butterfly valve type 240 PVC-U FC (Fail safe to close) Without manual override



### Model:

- Connecting dimension: ISO 7005 PN 10, EN 1092 PN 10, DIN 2501 PN 10, ANSI/ASME B 16.5 Class 150, BS 1560: 1989, BS 4504, JIS B 2220
- Overall length according to EN 558-1, ISO 5752
- Control range 90°<

d [mm]	DN [mm]	Inch	PN	kv-value ( $\Delta p=1$ bar) [l/min]	EPDM Code	FPM Code
63	50	2	10	1470	<b>199 240 002</b>	<b>199 240 022</b>
75	65	2 ½	10	2200	<b>199 240 003</b>	<b>199 240 023</b>
90	80	3	10	3000	<b>199 240 004</b>	<b>199 240 024</b>
110	100	4	10	6500	<b>199 240 005</b>	<b>199 240 025</b>
140	125	5	10	11500	<b>199 240 006</b>	<b>199 240 026</b>
160	150	6	10	16600	<b>199 240 007</b>	<b>199 240 027</b>
225	200	8	10	39600	<b>199 240 008</b>	<b>199 240 028</b>
280	250	10	10	55200	<b>199 240 009</b>	<b>199 240 029</b>
315	300	12	10	80000	<b>199 240 010</b>	<b>199 240 030</b>

d [mm]	Actuator unit type	D [mm]	D1 min. [mm]	D1 max. [mm]	d2 [mm]	H [mm]	H1 [mm]	H2 [mm]	H3 [mm]	H4 [mm]	H5 [mm]	L [mm]	L1 [mm]
63	PA-30 FC	19	120.0	125.0	104	327	77	134	117	70	15	45	276
75	PA-30 FC	19	139.7	145.0	115	340	83	140	117	70	15	46	276
90	PA-35 FC	19	150.0	160.0	131	361	89	146	126	78	15	49	326
110	PA-40 FC	19	175.0	190.5	161	400	104	167	129	86		56	370
140	PA-45 FC	23	210.0	215.9	187	436	117	181	139	96		64	411
160	PA-50 FC	24	241.3	241.3	215	468	130	189	149	106		72	423
225	PA-55 FC	23	290.0	295.0	267	529	158	210	161	118		73	452
280	PA-65 FC	25	353.0	362.0	329	808	205	264	191	148		113	648
315	PA-70 FC	25	400.0	432.0	379	866	228	285	196	157		113	663

d [mm]	L2 [mm]	Q1 [mm]	Q2 [mm]
63	65	40	
75	65	54	35
90	72	67	50
110	80	88	74
140	90	113	97
160	100	139	123
225	112	178	169
280	137	210	207
315	145	256	253

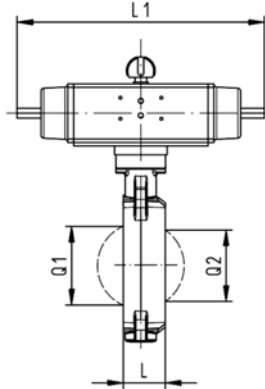
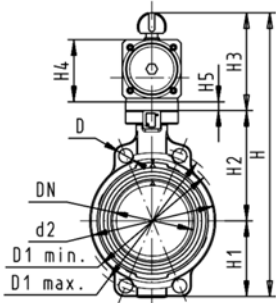


# Butterfly valve type 240 PVC-U FO (Fail safe to open) Without manual override



## Model:

- Connecting dimension: ISO 7005 PN 10, EN 1092 PN 10, DIN 2501 PN 10, ANSI/ASME B 16.5 Class 150, BS 1560: 1989, BS 4504, JIS B 2220
- Overall length according to EN 558-1, ISO 5752
- Control range 90°<



d [mm]	DN [mm]	Inch	PN	kv-value ( $\Delta p=1$ bar) [l/min]	EPDM Code	FPM Code
63	50	2	10	1470	<b>199 240 042</b>	<b>199 240 062</b>
75	65	2 ½	10	2200	<b>199 240 043</b>	<b>199 240 063</b>
90	80	3	10	3000	<b>199 240 044</b>	<b>199 240 064</b>
110	100	4	10	6500	<b>199 240 045</b>	<b>199 240 065</b>
140	125	5	10	11500	<b>199 240 046</b>	<b>199 240 066</b>
160	150	6	10	16600	<b>199 240 047</b>	<b>199 240 067</b>
225	200	8	10	39600	<b>199 240 048</b>	<b>199 240 068</b>
280	250	10	10	55200	<b>199 240 049</b>	<b>199 240 069</b>
315	300	12	10	80000	<b>199 240 050</b>	<b>199 240 070</b>

d [mm]	Actuator unit type	D [mm]	D1 min. [mm]	D1 max. [mm]	d2 [mm]	H [mm]	H1 [mm]	H2 [mm]	H3 [mm]	H4 [mm]	H5 [mm]	L [mm]	L1 [mm]
63	PA-30 FO	19	120.0	125.0	104	327	77	134	117	70	15	45	276
75	PA-30 FO	19	139.7	145.0	115	340	83	140	117	70	15	46	276
90	PA-35 FO	19	150.0	160.0	131	361	89	146	126	78	15	49	326
110	PA-40 FO	19	175.0	190.5	161	400	104	167	129	86		56	370
140	PA-45 FO	23	210.0	215.9	187	436	117	181	139	96		64	411
160	PA-50 FO	24	241.3	241.3	215	468	130	189	149	106		72	423
225	PA-55 FO	23	290.0	295.0	267	529	158	210	161	118		73	452
280	PA-65 FO	25	353.0	362.0	329	808	205	264	191	148		113	648
315	PA-70 FO	25	400.0	432.0	379	866	228	285	196	157		113	663

d [mm]	L2 [mm]	Q1 [mm]	Q2 [mm]
63	65	40	
75	65	54	35
90	72	67	50
110	80	88	74
140	90	113	97
160	100	139	123
225	112	178	169
280	137	210	207
315	145	256	253

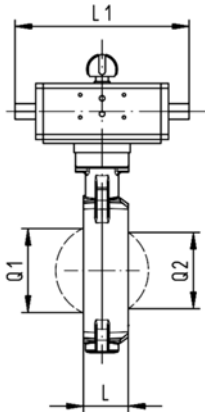
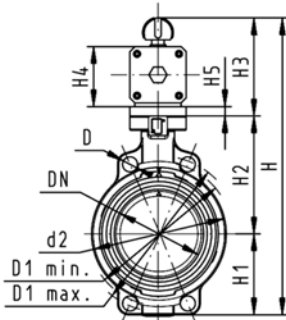


# Butterfly valve type 240 PVC-U DA (Double acting) Without manual override



## Model:

- Connecting dimension: ISO 7005 PN 10, EN 1092 PN 10, DIN 2501 PN 10, ANSI/ASME B 16.5 Class 150, BS 1560: 1989, BS 4504, JIS B 2220
- Overall length according to EN 558-1, ISO 5752
- Control range 90°<



d [mm]	DN [mm]	Inch	PN	kv-value ( $\Delta p=1$ bar) [l/min]	EPDM Code	FPM Code
63	50	2	10	1470	<b>199 240 082</b>	<b>199 240 102</b>
75	65	2 ½	10	2200	<b>199 240 083</b>	<b>199 240 103</b>
90	80	3	10	3000	<b>199 240 084</b>	<b>199 240 104</b>
110	100	4	10	6500	<b>199 240 085</b>	<b>199 240 105</b>
140	125	5	10	11500	<b>199 240 086</b>	<b>199 240 106</b>
160	150	6	10	16600	<b>199 240 087</b>	<b>199 240 107</b>
225	200	8	10	39600	<b>199 240 088</b>	<b>199 240 108</b>
280	250	10	10	55200	<b>199 240 089</b>	<b>199 240 109</b>
315	300	12	10	80000	<b>199 240 090</b>	<b>199 240 110</b>

d [mm]	Actuator unit type	D [mm]	D1 min. [mm]	D1 max. [mm]	d2 [mm]	H [mm]	H1 [mm]	H2 [mm]	H3 [mm]	H4 [mm]	H5 [mm]	L [mm]	L1 [mm]
63	PA-35 DA	19	120.0	125.0	104	317	77	134	107	60	15	45	177
75	PA-35 DA	19	139.7	145.0	115	330	83	140	107	60	15	46	177
90	PA-40 DA	19	150.0	160.0	131	348	89	146	113	66	15	49	190
110	PA-45 DA	19	175.0	190.5	161	372	104	167	102	71		56	235
140	PA-45 DA	23	210.0	215.9	187	408	117	181	111	78		64	235
160	PA-55 DA	24	241.3	241.3	215	448	130	189	129	86		72	279
225	PA-55 DA	23	290.0	295.0	267	507	158	210	139	96		73	279
280	PA-65 DA	25	353.0	362.0	329	748	205	264	161	118		113	350
315	PA-70 DA	25	400.0	432.0	379	816	228	285	173	130		113	381

d [mm]	L2 [mm]	Q1 [mm]	Q2 [mm]
63	55	40	
75	55	54	35
90	60	67	50
110	65	88	74
140	72	113	97
160	80	139	123
225	90	178	169
280	112	210	207
315	125	256	253